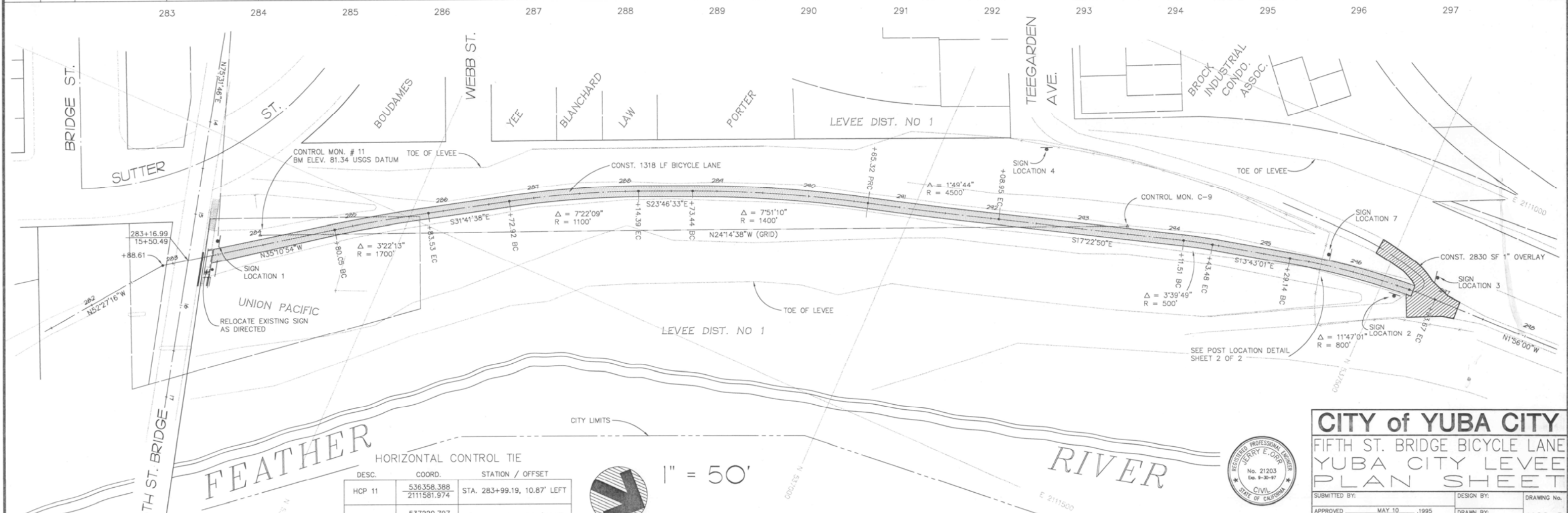


FINAL QUANTITIES:  
 THERMOPLASTIC PAVEMENT MARKINGS - 12 SF  
 CL & AGGREGATE BASE - 300 TONS



HORIZONTAL CONTROL TIE

DESC.	COORD.	STATION / OFFSET
HCP 11	536358.388 2111581.974	STA. 283+99.19, 10.87' LEFT
HCP C-9	537220.797 2111193.618	STA. 293+48.84, 8.36' LEFT

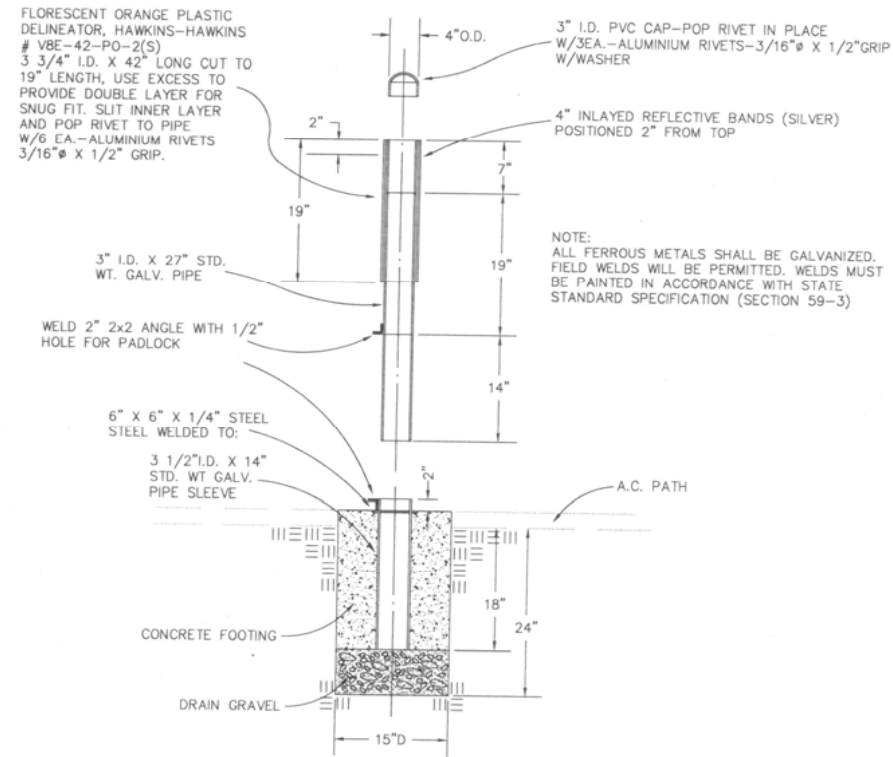


1" = 50'

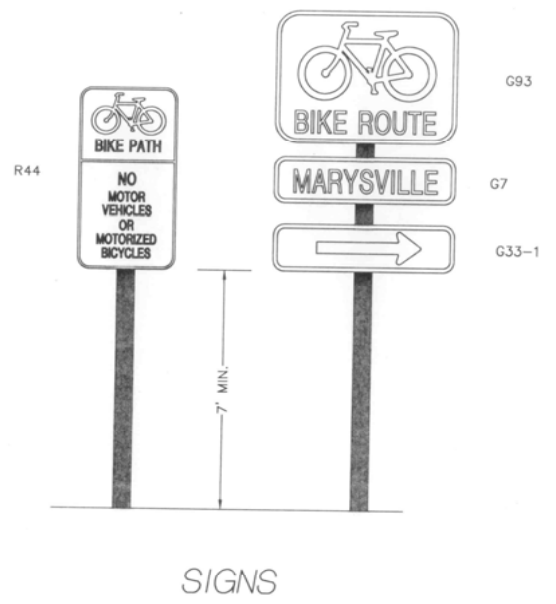


**CITY of YUBA CITY**  
 FIFTH ST. BRIDGE BICYCLE LANE  
 YUBA CITY LEVEE  
 PLAN SHEET

SUBMITTED BY: \_\_\_\_\_ DESIGN BY: \_\_\_\_\_ DRAWING No. \_\_\_\_\_  
 APPROVED: \_\_\_\_\_ MAY 10, 1995 DRAWN BY: AK3 4100-D

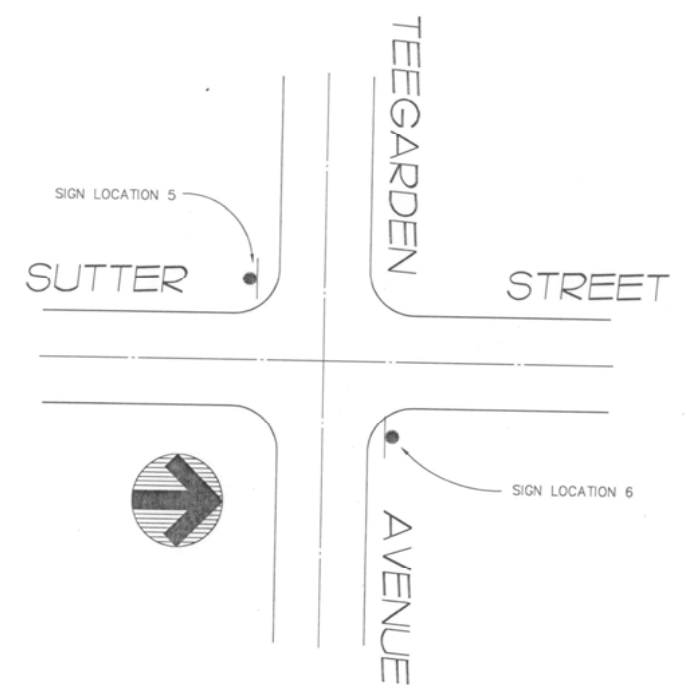


BARRIER POST DETAIL

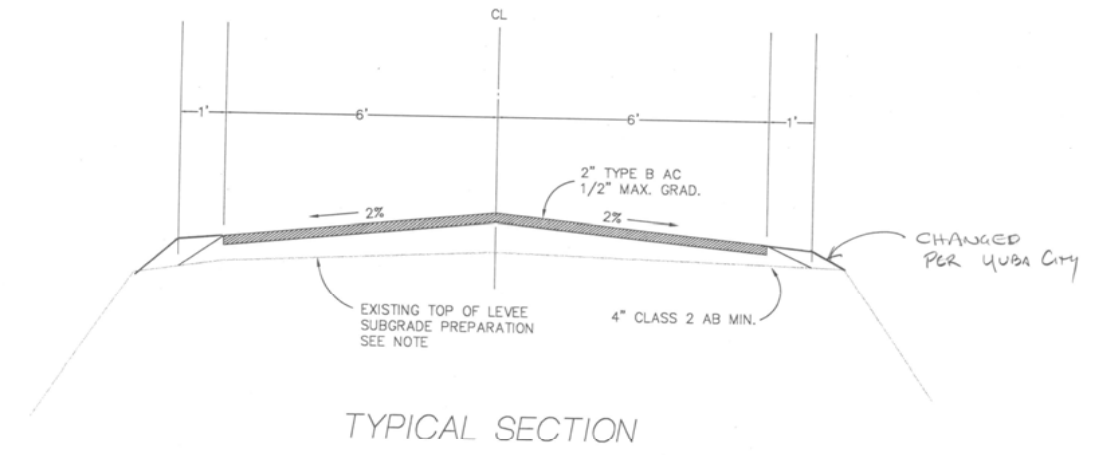


LOCATION	TYPE OF SIGN
1	G93 G7 (MARYSVILLE) G33-1 (ARROW LT)
2	G93 G7 (MARYSVILLE) G33-1 (ARROW RT)
3	G93 G7 (YUBA CITY) G33-1 (ARROW LT)
4	G93 G7 (MARYSVILLE) G33-1 (ARROW LT)
5	G93 G7 (MARYSVILLE) G33-1 (ARROW LT)
6	G93 G7 (MARYSVILLE) G33-1 (ARROW RT)
7	R44A

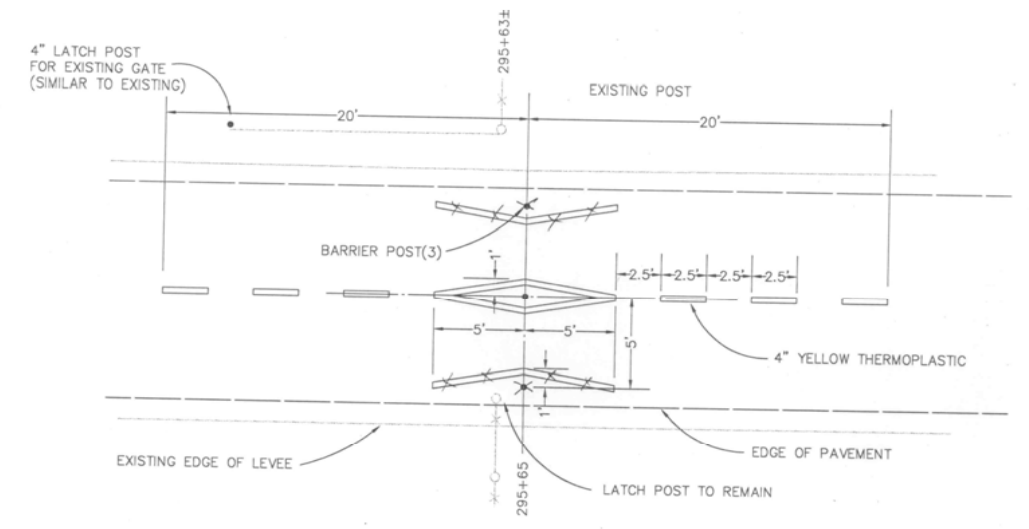
ALL SIGNS TO BE WHITE ON GREEN  
SIGN POST TO BE 2" DIAMETER STANDARD GALVANIZED PIPE. FLARE BOTTOM OF PIPE TO PREVENT TURNING.  
FOOTING TO BE 2' X 10" DIAMETER P.C.C.



ADDITIONAL SIGN LOCATIONS



NOTE: WEEDS SHALL BE REMOVED AND AREA GRADED. SURFACE SHALL BE STERILIZED WITH DICHLOROBENIL OR APPROVED EQUAL CONFORMING TO THE PROVISIONS IN SECTION 20-4.026, "PESTICIDES," OF THE STANDARD SPECIFICATIONS, AND APPLIED AT THE MAXIMUM LABEL RATE.



POST LOCATION DETAIL  
STATION 295+65

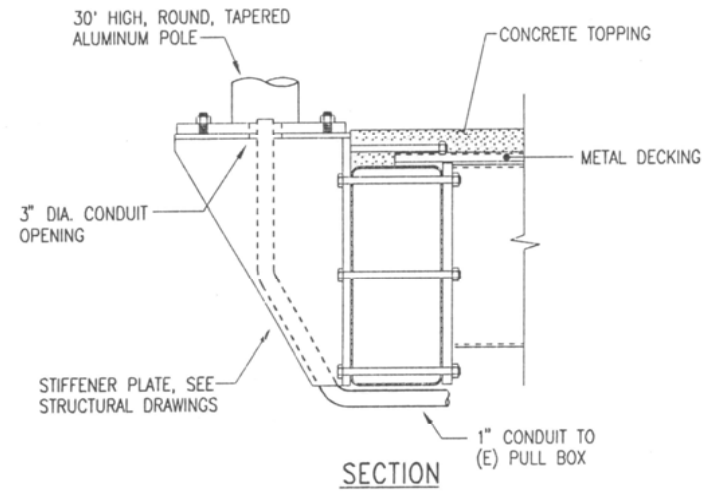
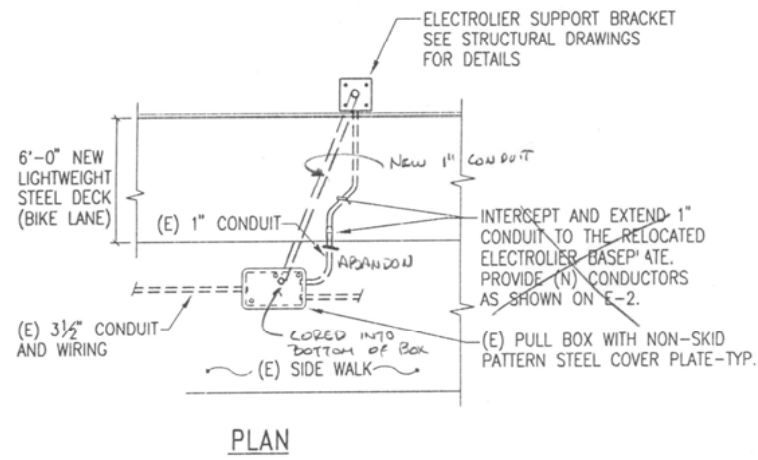


As Per 12-30-96 D. Larson

**CITY of YUBA CITY**

FIFTH STREET BRIDGE BICYCLE LANE  
YUBA CITY LEVEE  
DETAILS

SUBMITTED BY: \_\_\_\_\_ DESIGN BY: \_\_\_\_\_  
APPROVED: \_\_\_\_\_ JOB: \_\_\_\_\_ 4100-D



1 ELECTROLIER DETAIL  
E-1 NOT TO SCALE

### GENERAL NOTES

- EXISTING UTILITY LOCATION IS APPROXIMATE ONLY. VERIFY EXACT LOCATION AT THE SITE.
- LOCATION OF ELECTROLIERS IS DIRECTLY RELATED TO THE GEOMETRIC LAYOUT. IF THE GEOMETRIC LAYOUT CHANGES FROM THAT SHOWN ON THESE PLANS, NEW ELECTROLIER LOCATION SHALL BE ESTABLISH BY THE ENGINEER.
- THE CONTRACTOR SHALL VERIFY ALL CONTROLLING FIELD DIMENSIONS BEFORE ORDERING OR FABRICATING ANY MATERIAL.

### SYMBOLS AND ABBREVIATIONS

- ALSO SEE ES-1A AND ES-1B
- EXISTING CITY ELECTROLIER WITH 200W HPS LUMINAIRE TO BE RELOCATED
  - RELOCATED CITY ELECTROLIER WITH 200W HPS LUMINAIRE, SEE DETAIL 1 ON SHEET E-1 FOR MOUNTING REQUIREMENTS
  - (G) GROUND WIRE
  - PG&E PACIFIC GAS AND ELECTRIC COMPANY
  - V VOLT
  - W WATT

### PROJECT NOTES

- EXISTING PG&E SERVICE (240V, 1 PHASE) SHALL REMAIN.
- EXISTING 1 1/2" CONDUIT AND LIGHTING CIRCUIT TO OTHER ELECTROLIER SHALL REMAIN. MAINTAIN CIRCUIT CONTINUITY.
- EXISTING PAC BELL PULL BOXES TO REMAIN.
- 1"C, 2 #8 (HIGHWAY LIGHTING, 240V)  
1 #8 (GROUND)  
SEE DETAIL 1 THIS SHEET FOR ELECTROLIER DETAIL.
- EXISTING 3 1/2" CONDUIT AND WIRING INSTALLATION ACROSS THE BRIDGE SHALL REMAIN.
- 1"C, 2 #8 (HIGHWAY LIGHTING, 240V)  
1 #8 (GROUND)  
PROVIDE CONCRETE FOUNDATION PER ES-6DA EXCEPT THE ANCHOR BOLTS SHALL BE 1" DIA. x 54" x 6" WITH BOLT CIRCLE TO MATCH THE EXISTING.

### INDEX TO ELECTRICAL PLANS

- E-1 SIGNAL, LIGHTING AND ELECTRICAL SYSTEM
- E-2 LIGHTING

DESIGNED BY	JOC	BRIDGE NO.	18-C012
DRAWN BY	SEM	PROJECT NO.	93670-01
CHECKED BY	KSN	SCALE	NONE
APPROVED BY			

FIFTH STREET BRIDGE BICYCLE LANE  
YUBA CITY CALIFORNIA  
SIGNAL, LIGHTING AND ELECTRICAL SYSTEM

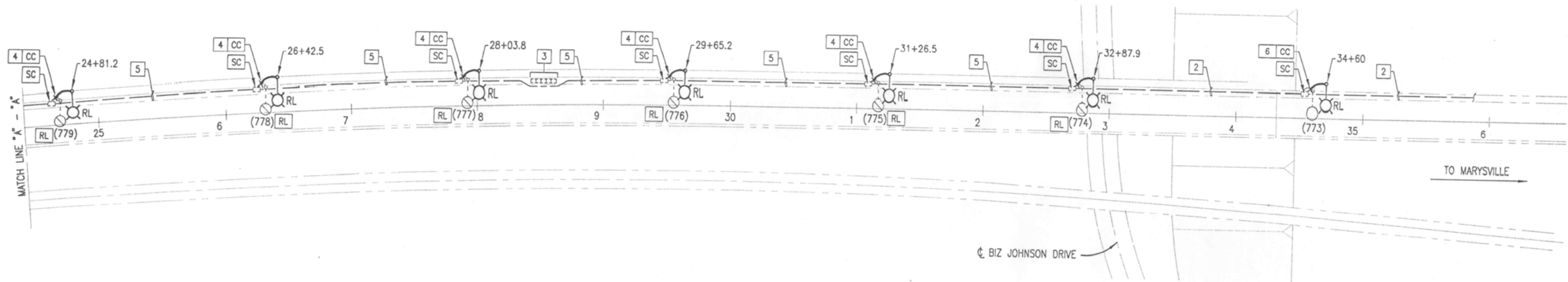
BIGGS CARDOSA ASSOCIATES INC. STRUCTURAL ENGINEERS  
2871 The Alameda, Suite 200  
Yuba, California 95126  
408-298-5510

Professional Engineer  
KENNETH S. NOKI  
No. 11537  
Exp. 6/30/97  
REGISTERED ELECTRICAL ENGINEER  
STATE OF CALIFORNIA

MTH Engineers, Inc.  
3350 Scott Blvd, Bldg. 11  
Santa Clara, CA 95054  
(408) 986-8558  
PROJECT NO. 93670-01

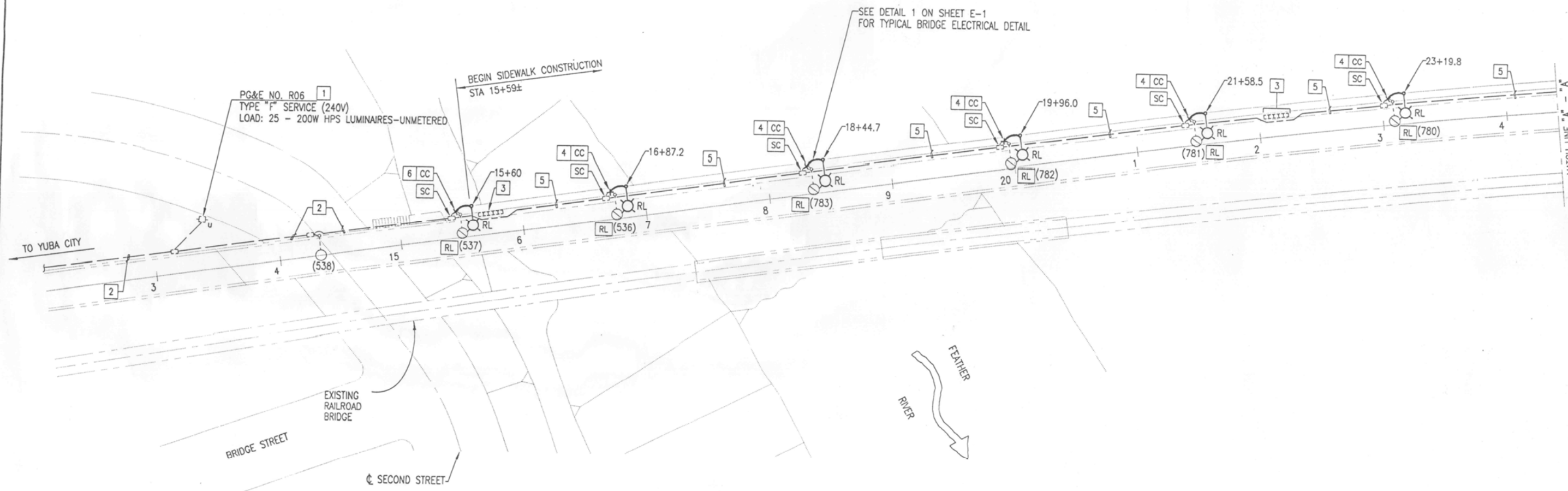
PLANS APPROVAL DATE

NO.	REVISIONS	BY	DATE



☉ BIZ JOHNSON DRIVE

TO MARYSVILLE



PG&E NO. R06  
TYPE "F" SERVICE (240V)  
LOAD: 25 - 200W HPS LUMINAIRES--UNMETERED

BEGIN SIDEWALK CONSTRUCTION  
STA 15+59±

SEE DETAIL 1 ON SHEET E-1  
FOR TYPICAL BRIDGE ELECTRICAL DETAIL

TO YUBA CITY

BRIDGE STREET

EXISTING RAILROAD BRIDGE

☉ SECOND STREET

FEATHER RIVER

1 SITE PLAN  
E-2 SCALE: 1" = 40'-0"



93670-01 / MTH2 / 9/8/94 / 480

NOTE:  
THE CONTRACTOR SHALL VERIFY ALL  
CONTROLLING FIELD DIMENSIONS BEFORE  
ORDERING OR FABRICATING ANY MATERIAL

NO.	REVISIONS	BY	DATE



**MH** engineers, inc.  
3350 Scott Blvd., Bldg. 11  
San Jose, CA 95054  
(408) 986-8558  
PROJECT NO.  
PLANS APPROVAL DATE

**BCF**  
BIGGS CARDOSA ASSOCIATES INC  
STRUCTURAL ENGINEERS  
1871 The Alameda, Suite 200  
San Jose, CA 95126  
408-298-5515

FIFTH STREET BRIDGE BICYCLE LANE  
CALIFORNIA  
YUBA CITY  
LIGHTING

DESIGNED BY	JQC
DRAWN BY	SEM
CHECKED BY	KSN
APPROVED BY	
SCALE	1" = 40'-0"
PROJECT NO.	93670-01



# COUNTY OF YUBA DEPARTMENT OF PUBLIC WORKS PLANS FOR CONSTRUCTION ON YUBA COUNTY BRIDGE

THE CONTRACTOR SHALL POSSESS  
A CLASS A GENERAL ENGINEERING  
CONTRACTOR'S LICENSE AT THE  
TIME A BID IS SUBMITTED

FOR CONSTRUCTION OF BICYCLE LANE & BRIDGE WIDENING  
ALONG 5TH STREET BRIDGE BETWEEN MARYSVILLE & YUBA CITY

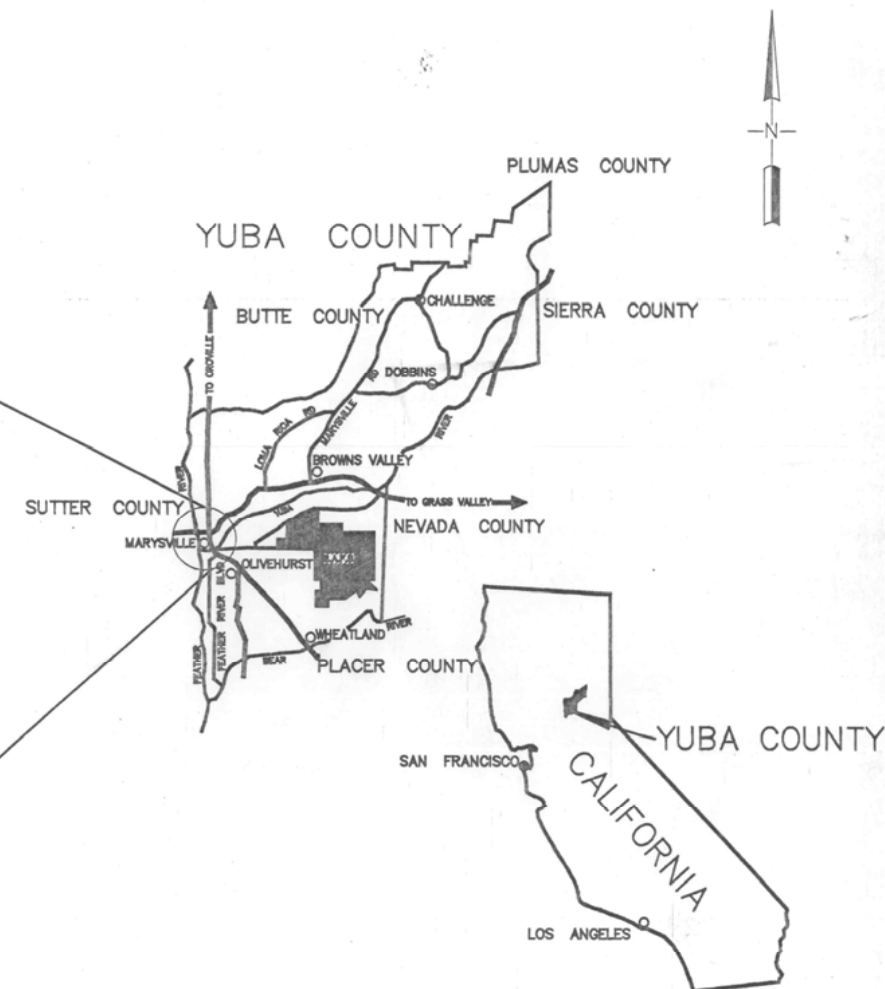
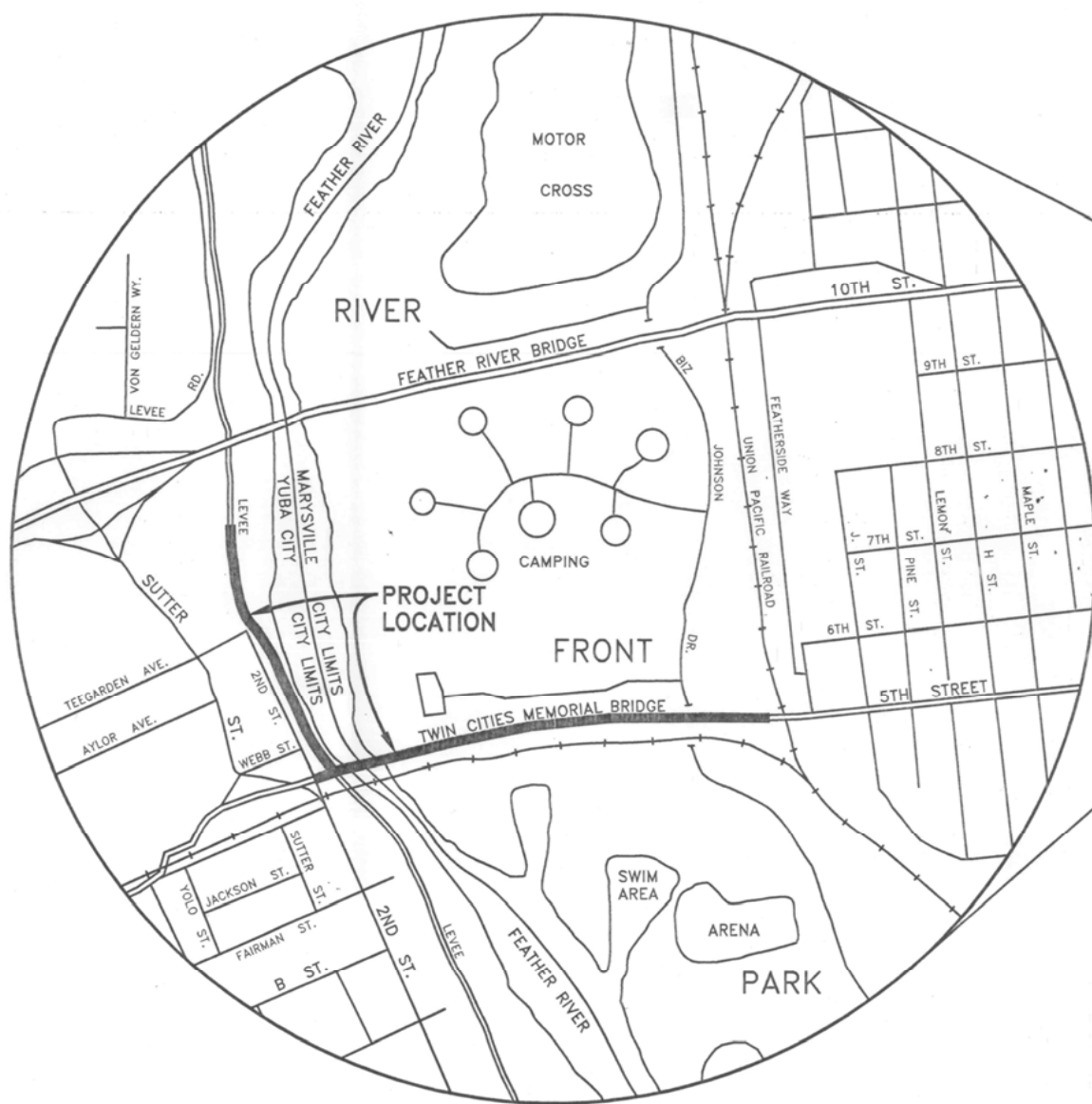
TO BE SUPPLEMENTED WITH STATE OF CALIFORNIA DEPARTMENT OF TRANSPORTATION STANDARD PLANS 1992 ED.

CONTRACT No. 95-4046  
PROJECT No. P116B-5

FUNDED BY PROP 116 - BICYCLE PROJECTS

## INDEX TO PLANS

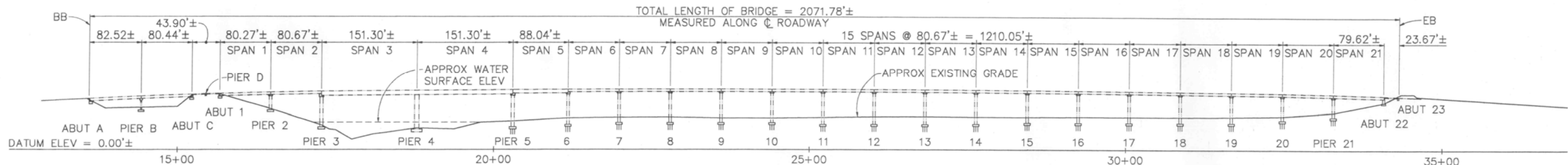
SHEET NO.	TITLE
GENERAL:	
1	TITLE SHEET
STRUCTURAL:	
1	GENERAL PLAN
2	ABUTMENT 1 PLAN & DETAILS
3	ABUTMENT 22 & 23 PLAN & DETAILS
4	EAST APPROACH PLAN & DETAILS
5	TYPICAL SECTIONS AND DETAILS NO. 1
6	TYPICAL SECTIONS & DETAILS NO. 2
7	DECK PLANS NO. 1
8	DECK PLANS NO. 2
9	DECK PLANS NO. 3
10	MISCELLANEOUS DETAILS
11	CHAIN LINK RAILING TYPE 7 MODIFIED
12	AS-BUILT LOG OF TEST BORINGS
CIVIL:	
C-1	YUBA CITY LEVEE PLAN SHEET
C-2	YUBA CITY LEVEE DETAILS
ELECTRICAL:	
E-1	SIGNAL, LIGHTING & ELECTRICAL SYSTEM
E-2	LIGHTING



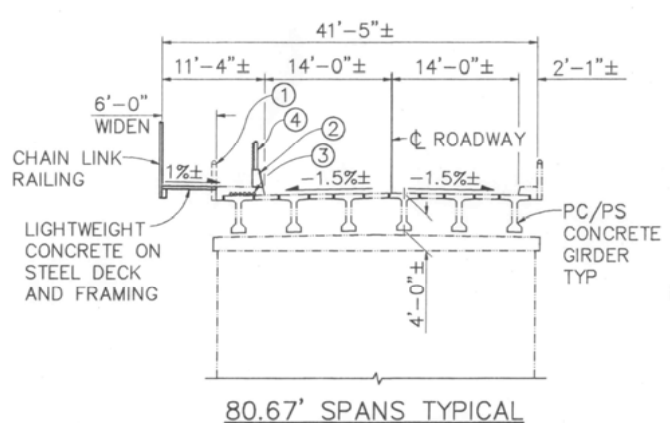
APPROVED BY: *Jim Burcham*  
DIRECTOR OF PUBLIC WORKS  
JIM BURCHAM R.C.E. No. 40417

CHAIRMAN BOARD OF SUPERVISORS

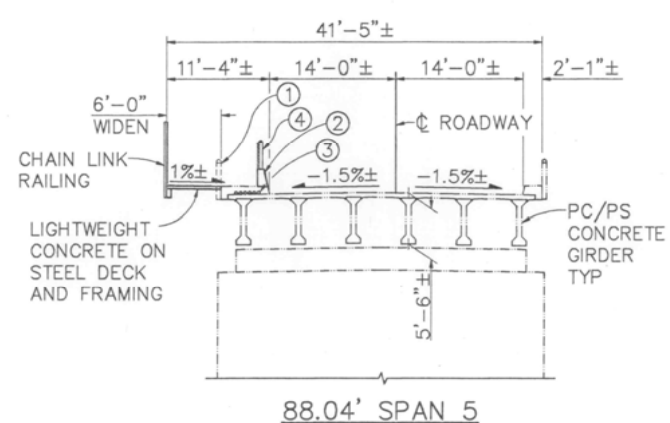
	BASIS OF BEARING	N/A	 COUNTY OF YUBA DEPARTMENT OF PUBLIC WORKS 938 14th ST. MARYSVILLE, CA 95901 (916) 741-6421 (916) 741-6569 FAX	DRAWN BY: R.E. MOE DESIGNED BY: P.J. DESTEFANO CHECKED BY: J.L. ANTHONY SUBMITTED BY:	SCALE: HORIZONTAL 1" = N/A  VERTICAL 1" = N/A	FILE NO. 9358150 SHEET <span style="font-size: 2em; font-weight: bold;">1</span> OF <span style="font-size: 2em; font-weight: bold;">1</span>																			
<table border="1" style="width: 100%; border-collapse: collapse;"> <thead> <tr> <th style="width: 10%;">NUMBER</th> <th style="width: 10%;">DATE</th> <th style="width: 60%;">DESCRIPTION</th> <th style="width: 10%;">BY</th> </tr> </thead> <tbody> <tr> <td style="text-align: center;">1</td> <td style="text-align: center;">10/6/95</td> <td>REVISED FOR REBID</td> <td style="text-align: center;">TJS</td> </tr> <tr> <td style="text-align: center;">-</td> <td style="text-align: center;">5/3/95</td> <td>RESPONSE TO 100% COMMENTS</td> <td style="text-align: center;">TJS</td> </tr> <tr> <td style="text-align: center;">-</td> <td style="text-align: center;">1/12/95</td> <td>100% SUBMITTAL</td> <td style="text-align: center;">TJS</td> </tr> <tr> <td style="text-align: center;">-</td> <td style="text-align: center;">9/2/94</td> <td>65% SUBMITTAL</td> <td style="text-align: center;">TJS</td> </tr> </tbody> </table>	NUMBER	DATE	DESCRIPTION	BY	1	10/6/95	REVISED FOR REBID	TJS	-	5/3/95	RESPONSE TO 100% COMMENTS	TJS	-	1/12/95	100% SUBMITTAL	TJS	-	9/2/94	65% SUBMITTAL	TJS					
NUMBER	DATE	DESCRIPTION	BY																						
1	10/6/95	REVISED FOR REBID	TJS																						
-	5/3/95	RESPONSE TO 100% COMMENTS	TJS																						
-	1/12/95	100% SUBMITTAL	TJS																						
-	9/2/94	65% SUBMITTAL	TJS																						



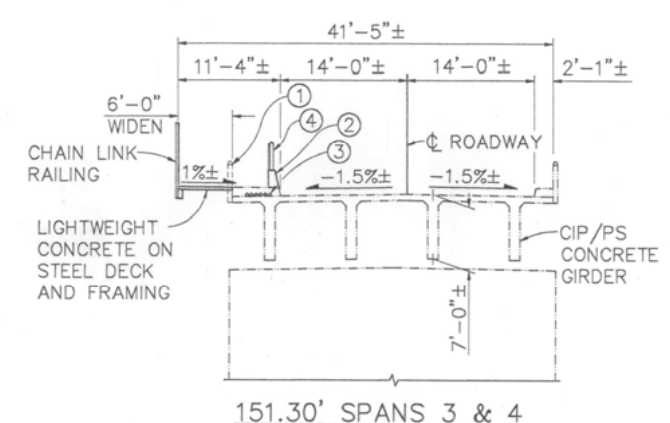
ELEVATION  
1" = 80'



80.67' SPANS TYPICAL



88.04' SPAN 5



151.30' SPANS 3 & 4

TYPICAL SECTIONS  
1" = 10'

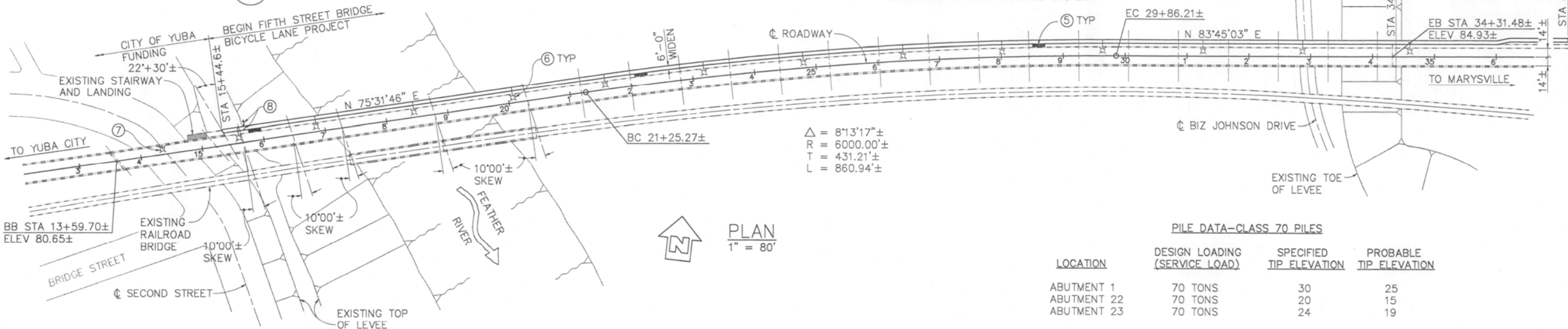
- NOTES:
- REMOVE EXISTING STEEL BARRIER RAILING (STA 15+36.3± TO STA 34+08.4±)
  - CONSTRUCT CONCRETE BARRIER
  - EXISTING PACIFIC BELL CONDUITS (TOTAL 6)
  - CHAIN LINK FENCE
  - EXISTING 3'x20' PACIFIC BELL SPLICE VAULT TO BE MODIFIED (TOTAL 3)
  - RESET 30' ALUMINUM LIGHTING STANDARD (TOTAL 13)
  - EXISTING LIGHTING STANDARD TO REMAIN
  - REMOVE ROAD SIGN
  - FOR GENERAL NOTES & STANDARD PLANS SEE 'DECK PLANS NO. 2' SHEET
  - FOR TRAFFIC CONTROL SYSTEM SEE

CONSTRUCTION AREA SIGNS			
TYPE	PANEL SIZE	NO. OF POSTS & SIZE	EACH
C18	48x48	1-4x6 (S)	2
C13	48x18	1-4x4 (S)	2
C9A	48x48	PORTABLE	2
C36	48x48	PORTABLE	2
*	48x48	1-4x6 (S)	2

\* "BRIDGE CLOSED TO PEDESTRIAN & BIKE TRAFFIC"  
(S) DENOTES STATIONARY MOUNTED  
SEE NOTE 10 FOR TRAFFIC CONTROL SYSTEM

APPROXIMATE QUANTITIES		
TRAFFIC CONTROL SYSTEM	1	LS
BRIDGE REMOVAL (PORTION)	1	LS
FURNISH PILING (CLASS 70)	160	LF
DRIVE PILE (CLASS 70)	3	EA
DRILL AND BOND DOWEL	847	LF
DRILL AND BOND DOWEL (EPOXY CARTRIDGE)	760	LF
STEEL DECK	10,600	SF
RELOCATE ELECTROLIER	1	LS

FINAL PAY QUANTITIES		
STRUCTURE EXCAVATION (BRIDGE)	46	CY
STRUCTURE EXCAVATION (RETAINING WALL)	69	CY
STRUCTURE BACKFILL (BRIDGE)	21	CY
STRUCTURE BACKFILL (RETAINING WALL)	36	CY
STRUCTURAL CONCRETE, BRIDGE	59	CY
STRUCTURAL CONCRETE, RETAINING WALL	18	CY
LIGHTWEIGHT CONCRETE	97	CY
BAR REINFORCING STEEL (BRIDGE)	10,300	LB
BAR REINFORCING STEEL (RETAINING WALL)	2,360	LB
STRUCTURAL STEEL (BRIDGE)	107,000	LB
MINOR CONCRETE (SIDEWALK)	38	CY
MISCELLANEOUS METAL (BRIDGE)	1,950	LB
CHAIN LINK FENCE	1,890	LF
CHAIN LINK RAILING (TYPE 7 MODIFIED)	1,880	LF
CONCRETE BARRIER	1,890	LF
THERMOPLASTIC PAVEMENT MARKING	27	SF

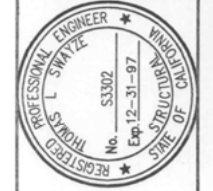


PLAN  
1" = 80'

LOCATION	DESIGN LOADING (SERVICE LOAD)	SPECIFIED TIP ELEVATION	PROBABLE TIP ELEVATION
ABUTMENT 1	70 TONS	30	25
ABUTMENT 22	70 TONS	20	15
ABUTMENT 23	70 TONS	24	19

NOTE:  
THE CONTRACTOR SHALL VERIFY ALL CONTROLLING FIELD DIMENSIONS BEFORE

NO.	DATE	BY	REVISIONS
1	10/6/95	TLS	REVISED FOR REBID
2	5/2/95	TLS	RESPONSE TO 100% COMMENTS
3	11/17/95	TLS	100% SUBMITTAL
4	1/17/96	TLS	65% SUBMITTAL
5	9/7/94	TLS	REVISIONS

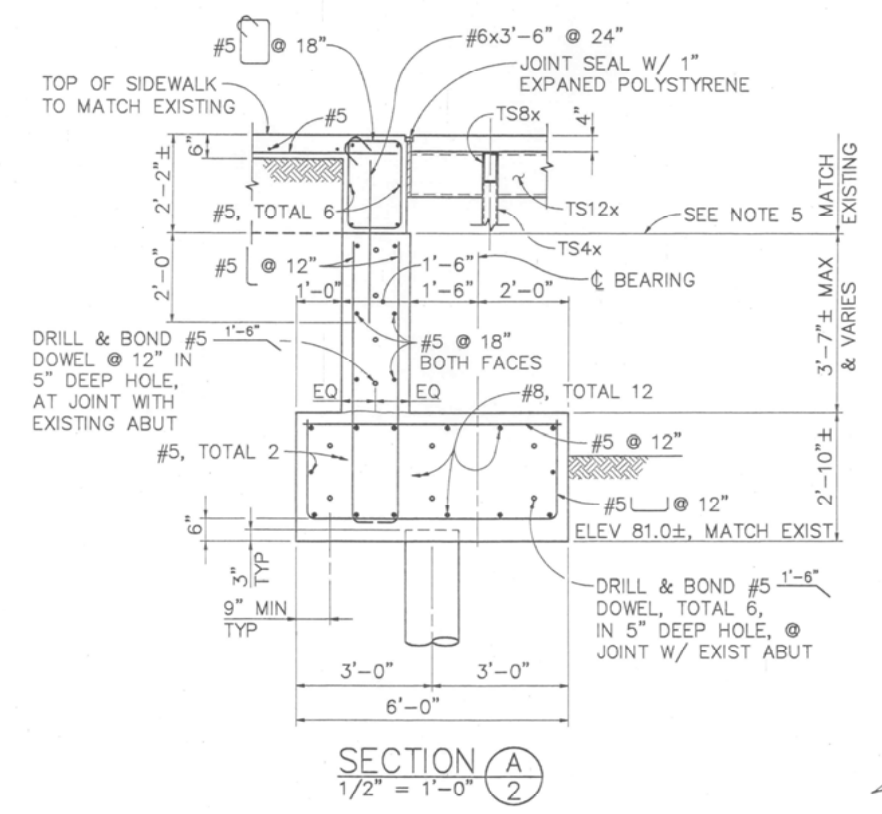
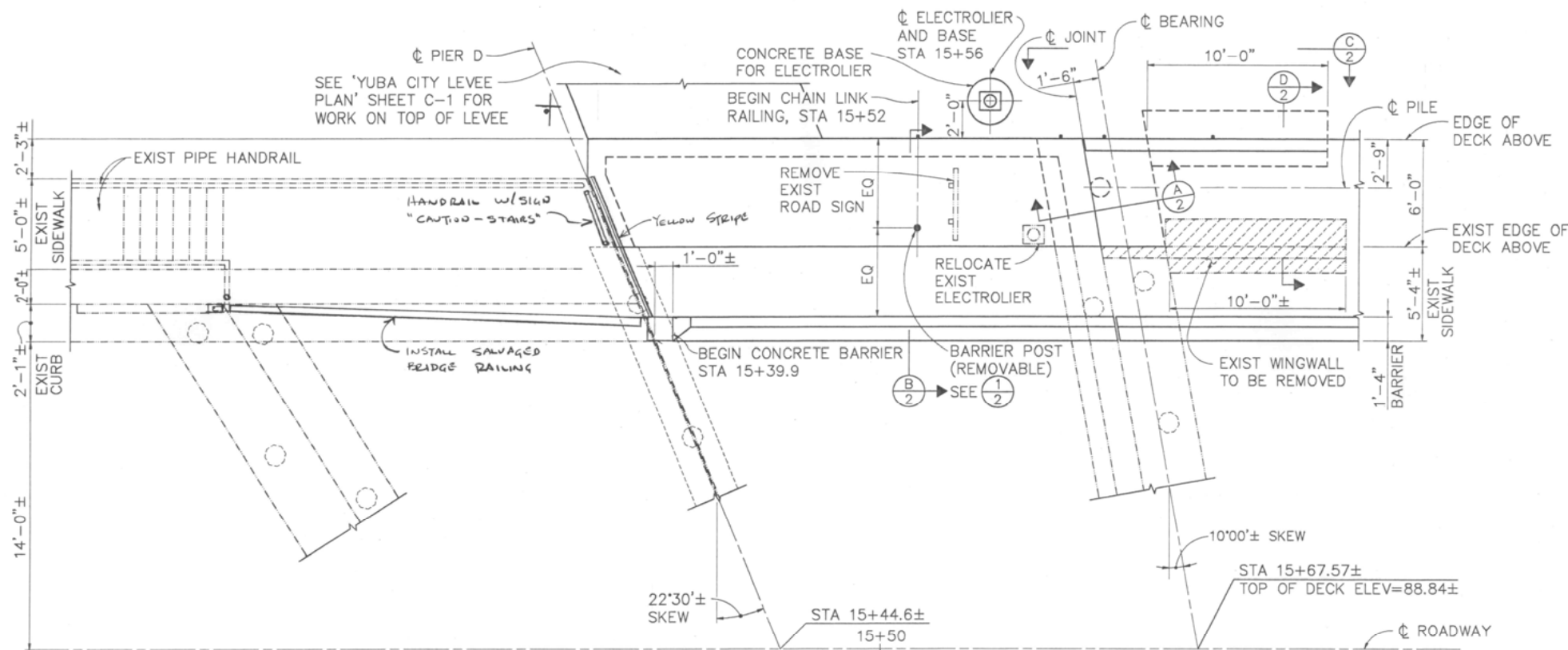


REGISTERED STRUCTURAL ENGINEER  
10/6/15  
PLANS APPROVAL DATE

**BIGGS CARDOSA ASSOCIATES INC.**  
STRUCTURAL ENGINEERS  
1871 The Alameda, Suite 200  
408-208-9516

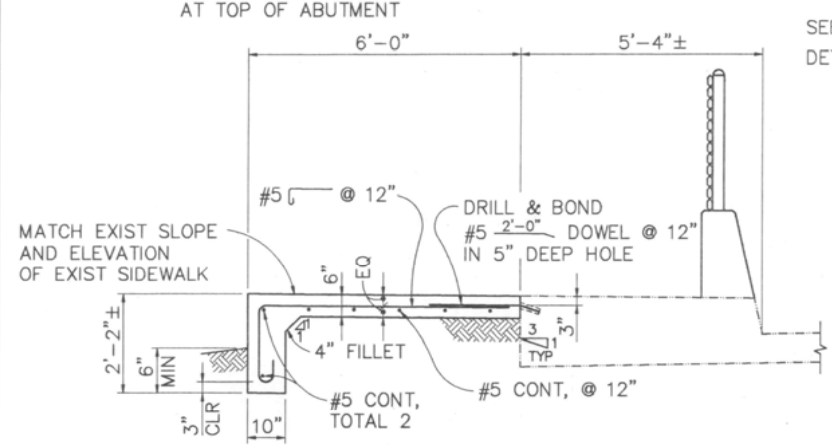
FIFTH STREET BRIDGE BICYCLE LANE  
CALIFORNIA  
YUBA COUNTY

DESIGNED BY PJD  
DRAWN BY DSD  
CHECKED BY JLA  
APPROVED BY SAB  
SCALE AS SHOWN  
PROJECT NO. 93058.1  
BRIDGE NO. 18C-012

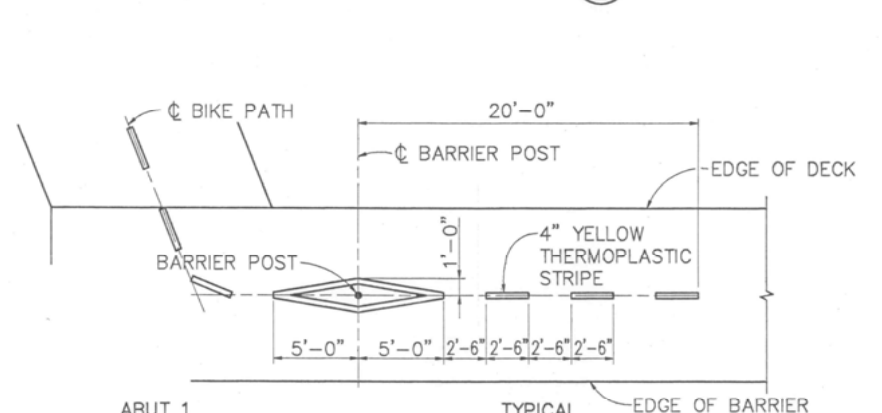
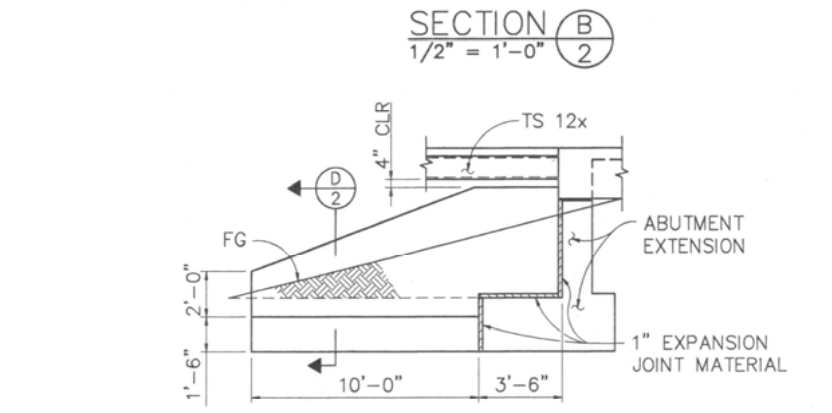
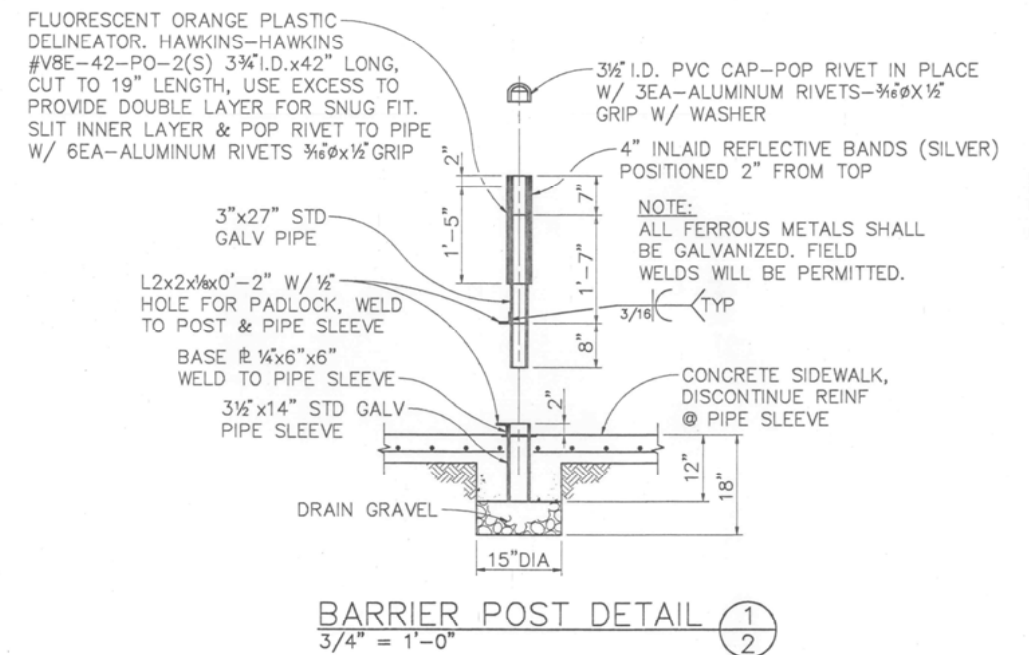
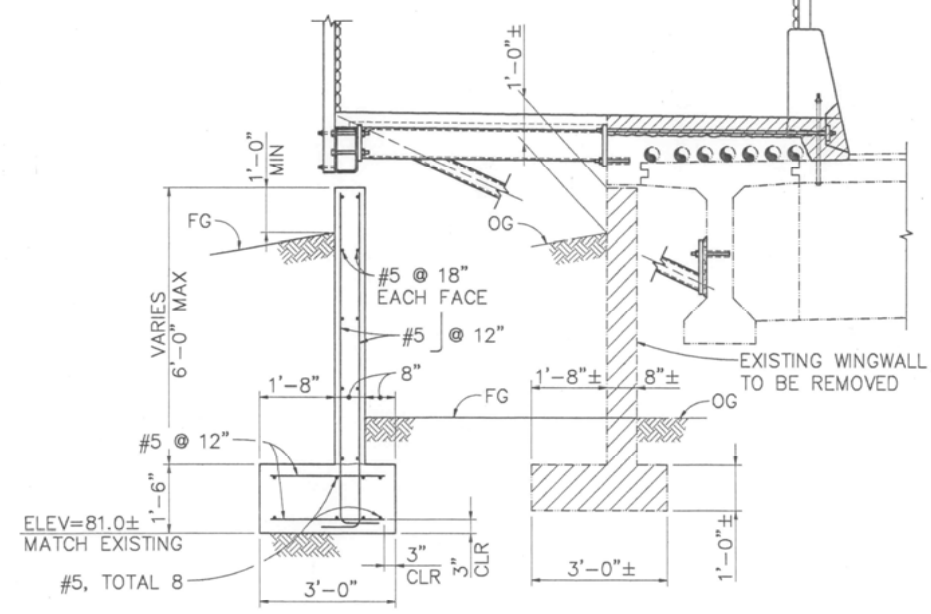


- NOTES:
- INDICATES EXISTING STRUCTURE
  - ▨ INDICATES CONCRETE TO BE REMOVED
  - SUPERSTRUCTURE AT ABUTMENT 1 NOT SHOWN FOR CLARITY
  - STATIONS ARE INDICATED FROM  $\odot$  ROADWAY
  - MATCH SLOPE AND ELEVATION AT TOP OF ABUTMENT

ABUTMENT 1 PLAN  
1/4" = 1'-0"



SEE  $\odot$  A FOR BARRIER DETAILS NOT NOTED

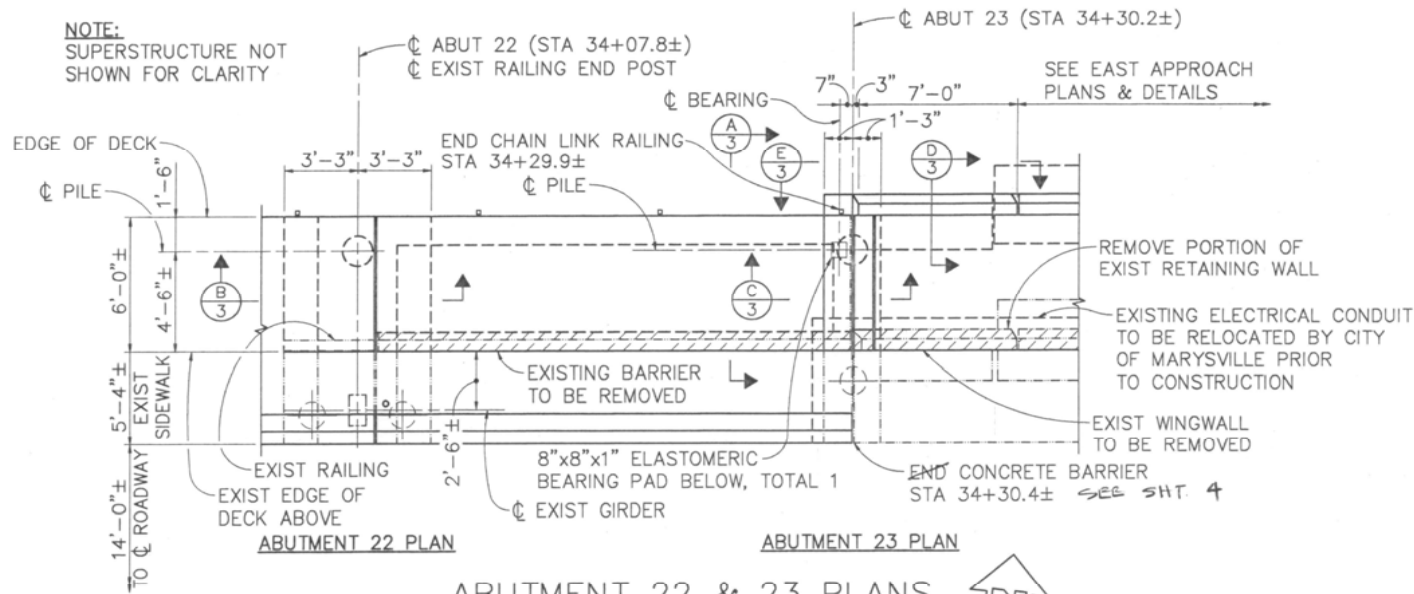


DETAIL  
NO SCALE  
2

DESIGNED BY	PJD	BRIDGE NO.	18C-012
DRAWN BY	DSD	PROJECT NO.	93058.1
CHECKED BY	JLA	SCALE	AS SHOWN
APPROVED BY		YUBA COUNTY	
BIGGS CARDOSA ASSOCIATES INC. STRUCTURAL ENGINEERS		CALIFORNIA	
1877 The Alameda, Suite 200, Sacramento, California 95811		YUBA COUNTY	
REGISTERED STRUCTURAL ENGINEER		ABUTMENT 1 PLAN & DETAILS	
No. S3302 Exp. 12-31-97		FIFTH STREET BRIDGE BICYCLE LANE	
REGISTERED PROFESSIONAL ENGINEER		CALIFORNIA	
1/6/95		YUBA COUNTY	
PLANS APPROVAL DATE		ABUTMENT 1 PLAN & DETAILS	
REVISIONS		ABUTMENT 1 PLAN & DETAILS	
NO.	REVISIONS		
1	REMOVED FOR REBID	TLS 10/9/95	
	RESPONSE TO 100% COMMENTS	TLS 5/3/95	
	100% SUBMITTAL	TLS 11/7/95	
	65% SUBMITTAL	TLS 9/2/94	
		BY DATE	



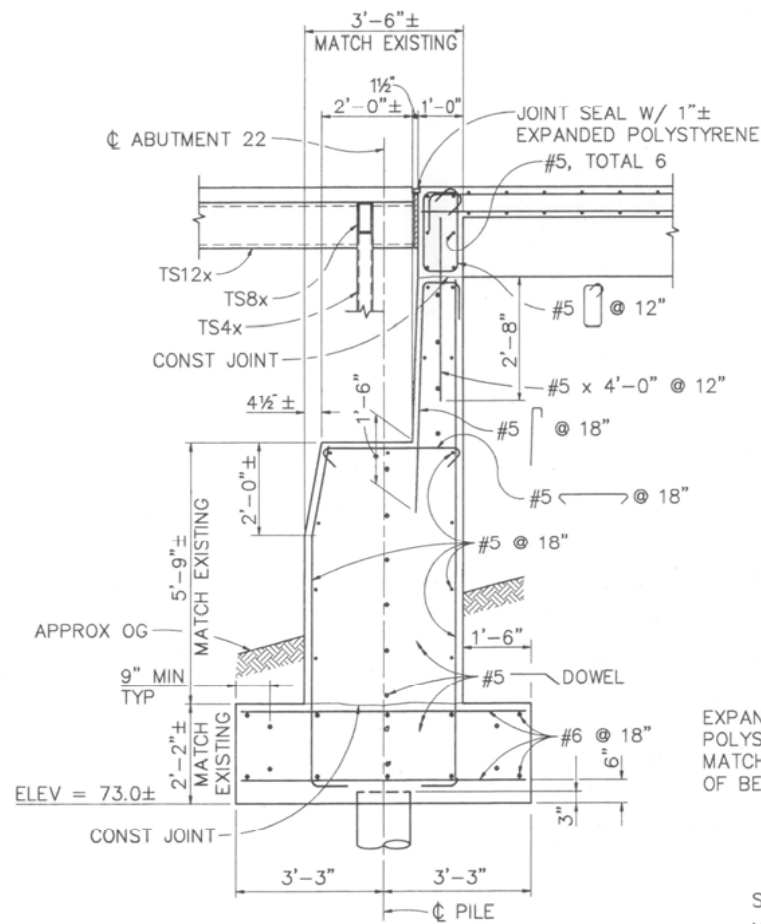
NOTE:  
SUPERSTRUCTURE NOT  
SHOWN FOR CLARITY



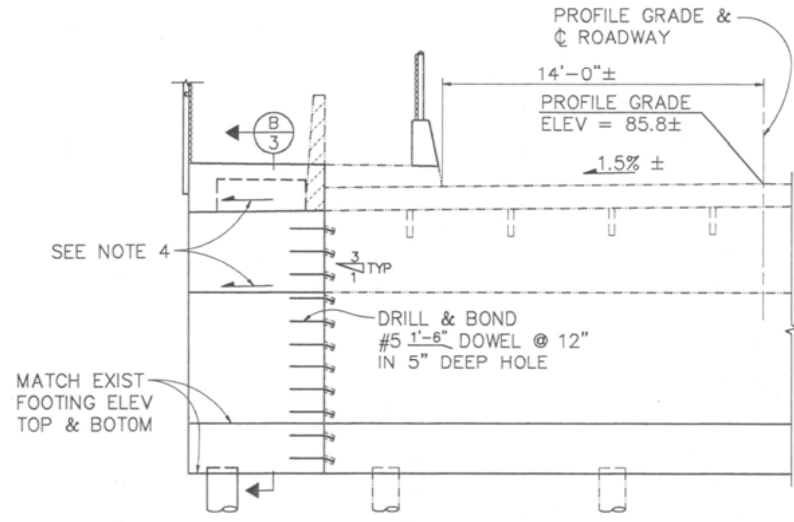
ABUTMENT 22 & 23 PLANS  
1/4" = 1'-0"

NOTES:

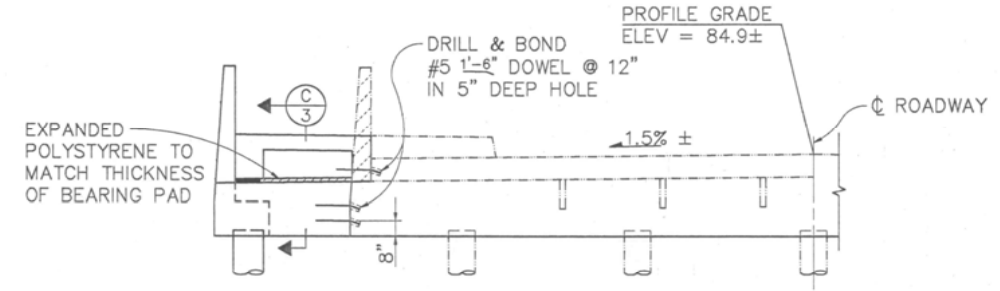
- INDICATES EXISTING STRUCTURE
- ▨ INDICATES CONCRETE TO BE REMOVED
- SUPERSTRUCTURE NOT SHOWN FOR CLARITY
- MATCH SLOPE OF EXIST ABUTMENT



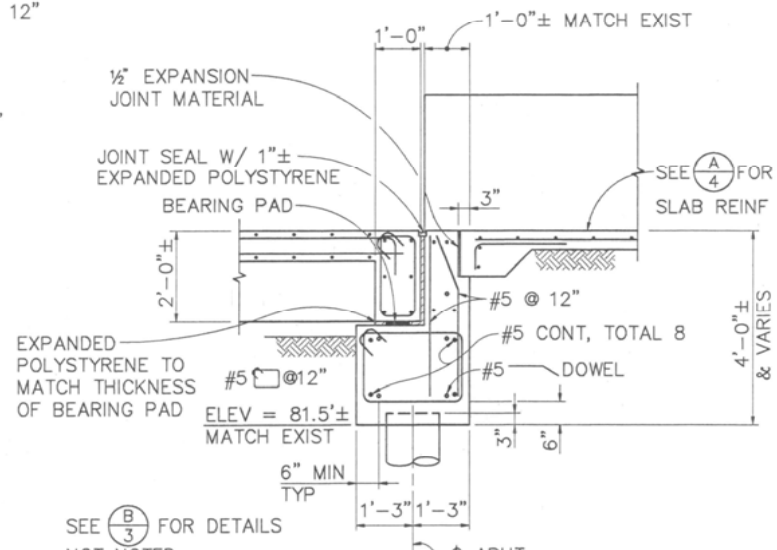
SECTION B  
1/2" = 1'-0"



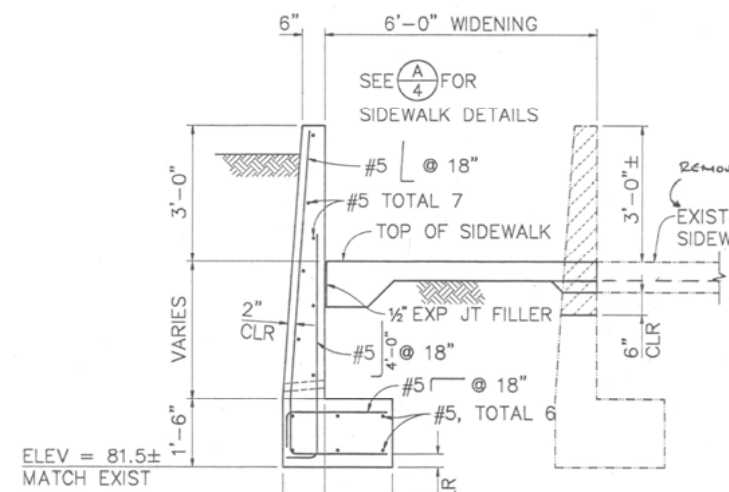
PARTIAL ELEVATION ABUTMENT 22  
1/4" = 1'-0"



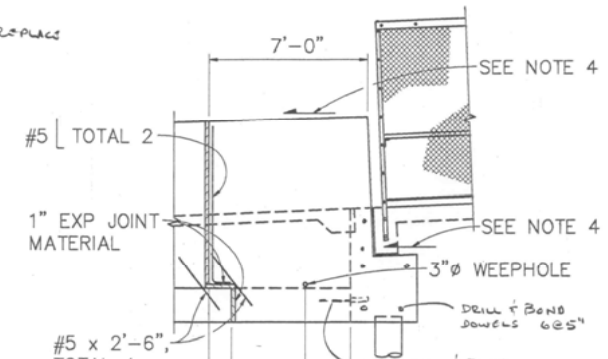
PARTIAL ELEVATION ABUTMENT 23  
1/4" = 1'-0"



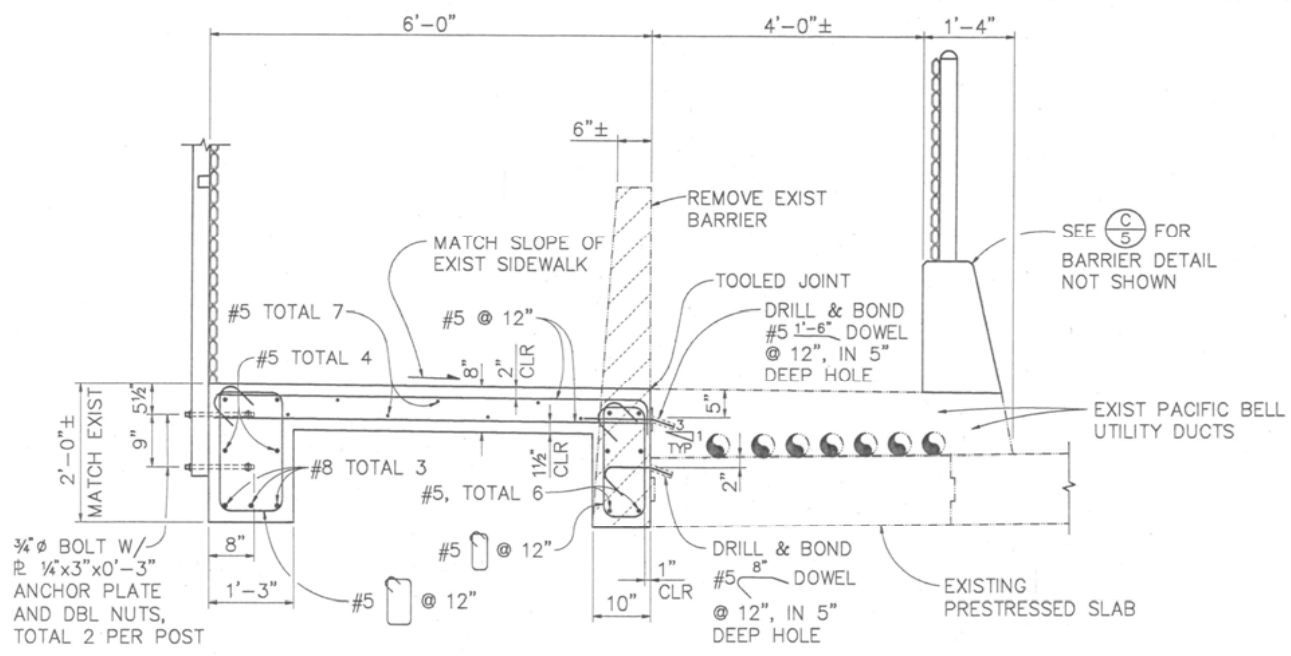
SECTION C  
1/2" = 1'-0"



SECTION D  
1/2" = 1'-0"



SECTION E  
1/4" = 1'-0"

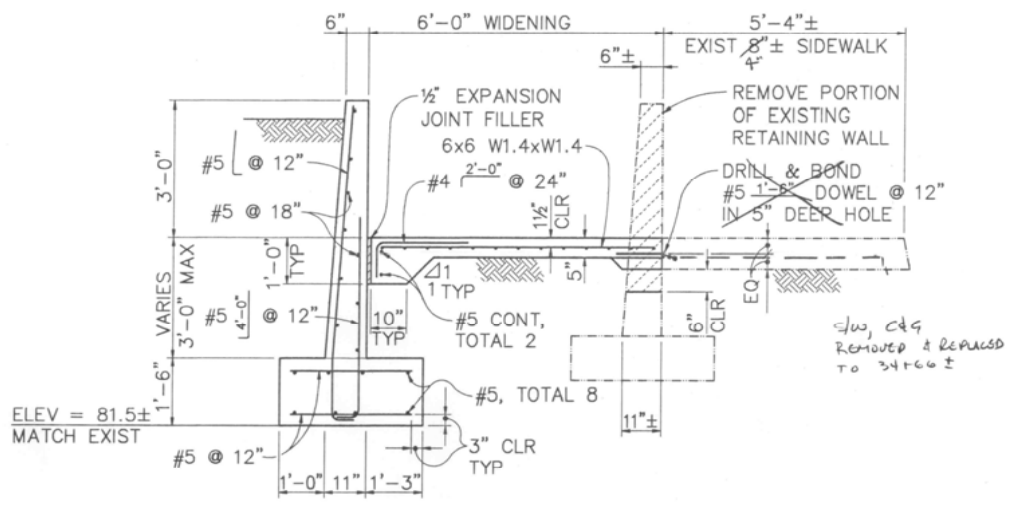
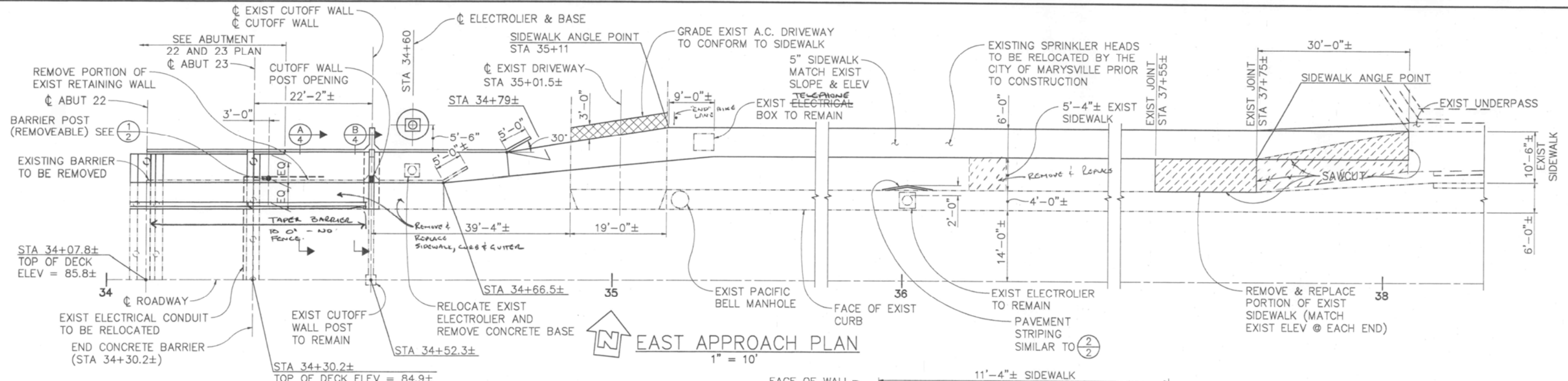


SECTION A  
3/4" = 1'-0"

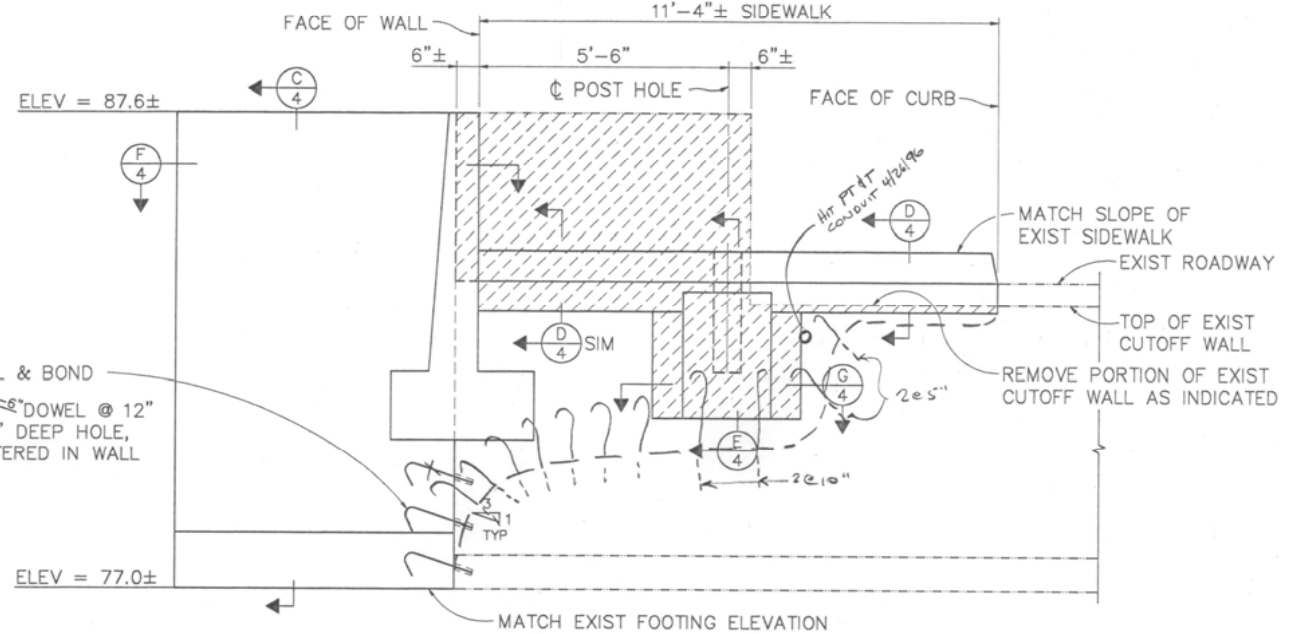
DESIGNED BY	PJD	DATE	10/6/95
DRAWN BY	DSD	DATE	1/2/95
CHECKED BY	JLA	DATE	9/2/94
APPROVED BY	AS SHOWN	DATE	
SCALE	AS SHOWN	DATE	
PROJECT NO.	93058.1	DATE	
BRIDGE NO.	18C-012	DATE	
REVISIONS		NO.	
1	REVISED FOR REBID	1	10/6/95
2	100% SUBMITTAL	1	1/2/95
3	65% SUBMITTAL	1	9/2/94

REGISTERED PROFESSIONAL ENGINEER  
**BIGGS CARDOSA ASSOCIATES INC.**  
 STRUCTURAL ENGINEERS  
 1871 The Alameda, Suite 200  
 San Jose, California 95126  
 408-286-6516

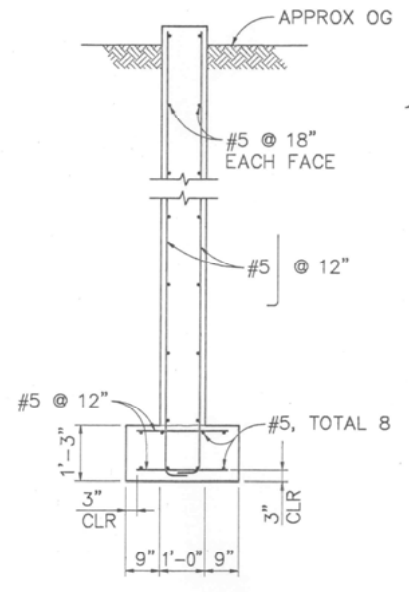
FIFTH STREET BRIDGE BICYCLE LANE  
 CALIFORNIA  
 YUBA COUNTY  
 ABUTMENT 22 & 23 PLAN & DETAILS



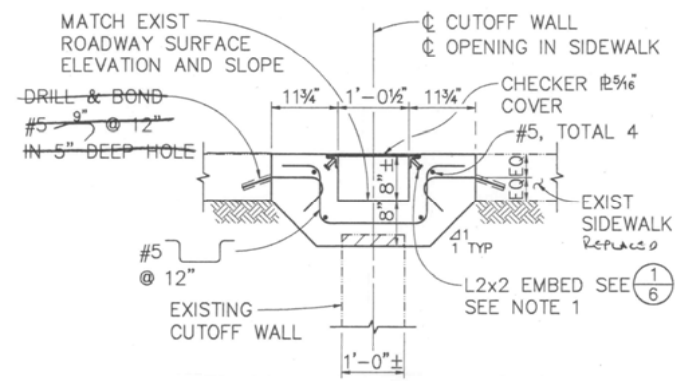
SECTION A  
1/2" = 1'-0"



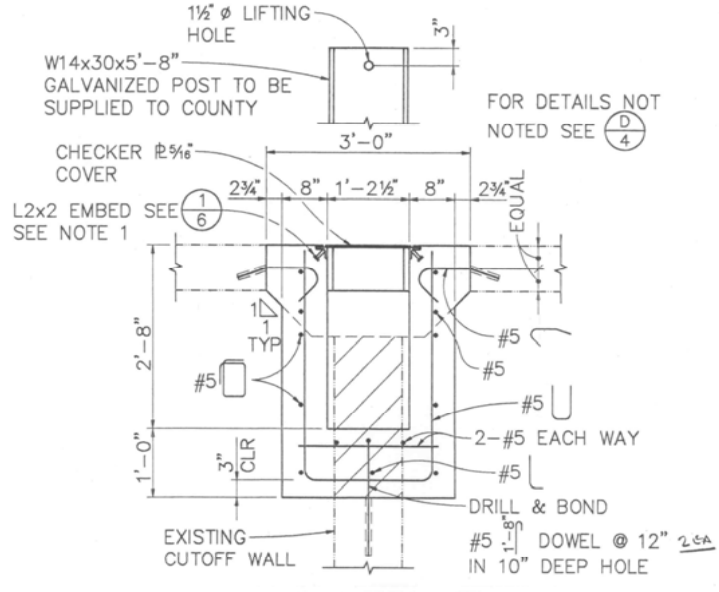
TYPICAL CUTOFF WALL ELEVATION B  
1/2" = 1'-0"



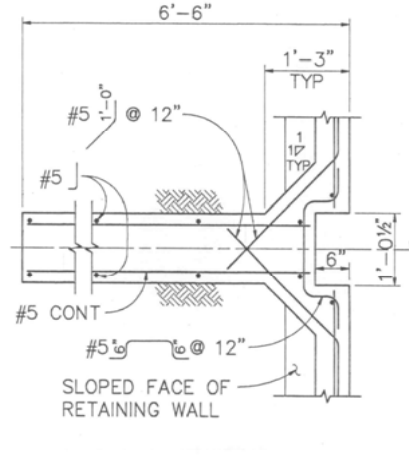
SECTION C  
1/2" = 1'-0"



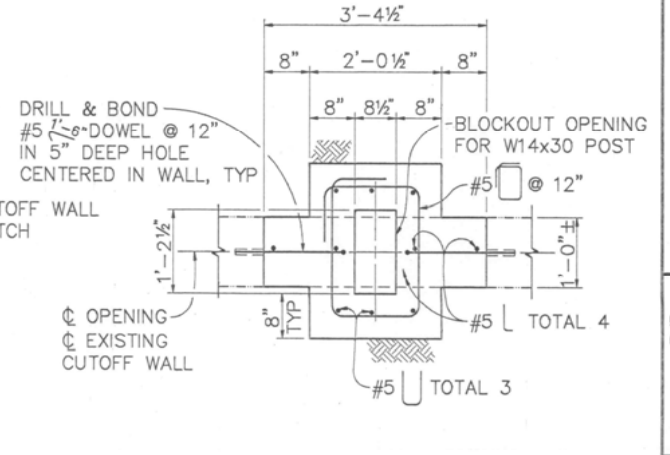
SECTION D  
3/4" = 1'-0"



SECTION E  
3/4" = 1'-0"



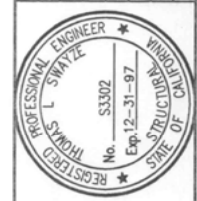
SECTION F  
3/4" = 1'-0"



SECTION G  
3/4" = 1'-0"

- NOTES:**
1. AT FACE OF CURB REMOVE VERTICAL LEG OF ANGLE AND BEND TO MATCH CURB PROFILE. WELD LAST STUD TO HORIZONTAL LEG OF ANGLE.
  2. --- INDICATES EXISTING STRUCTURE
  3. ▨ INDICATES CONCRETE TO BE REMOVED

NO.	REVISIONS	DATE
1	REVISED FOR REBID	TLS 10/6/95
2	RESPONSE TO 100% COMMENTS	TLS 12/3/95
3	100% SUBMITTAL	TLS 1/27/96
4	65% SUBMITTAL	TLS 9/7/94

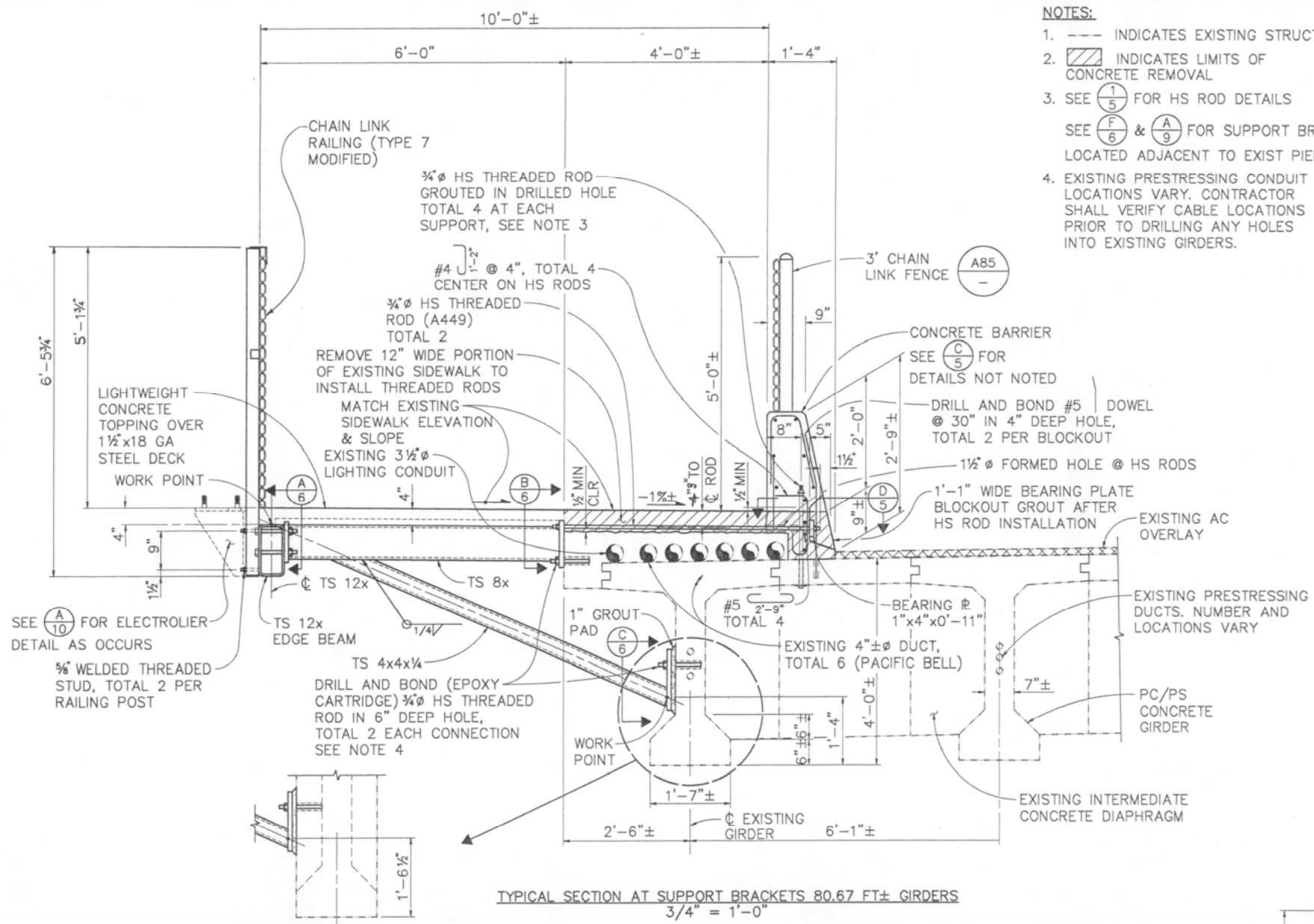


REGISTERED STRUCTURAL ENGINEER  
 1/6/96  
 PLANS APPROVAL DATE

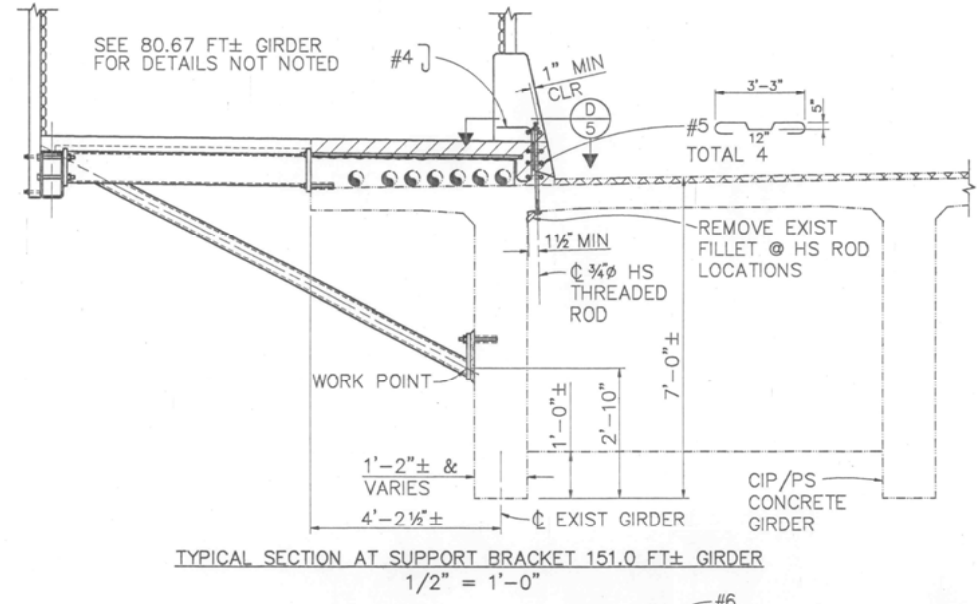
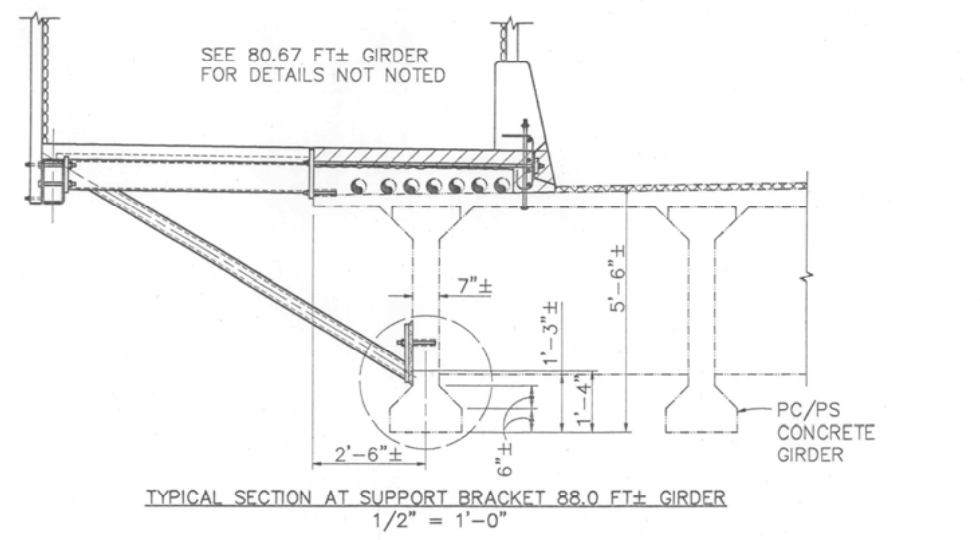
**BER**  
**BIGGS CARDOSA ASSOCIATES INC**  
 STRUCTURAL ENGINEERS  
 1871 The Alameda, Suite 200  
 San Francisco, California 94126  
 415-556-5516

FIFTH STREET BRIDGE BICYCLE LANE  
 CALIFORNIA  
 YUBA COUNTY  
**EAST APPROACH PLAN & DETAILS**  
 DESIGNED BY PJD  
 DRAWN BY DSD  
 CHECKED BY JLA  
 APPROVED BY  
 SCALE AS SHOWN  
 BRIDGE NO. 18C-012  
 PROJECT NO. 93058.1





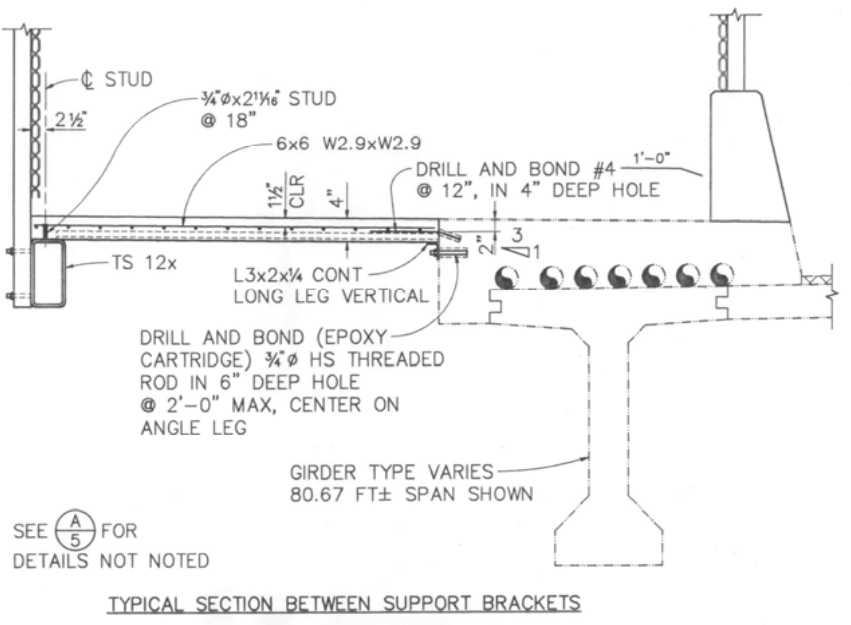
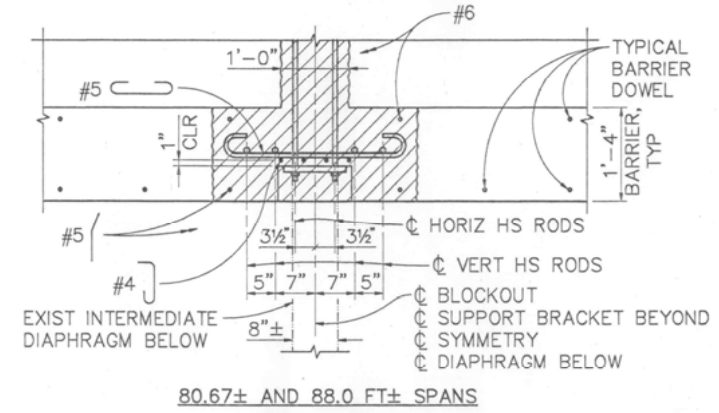
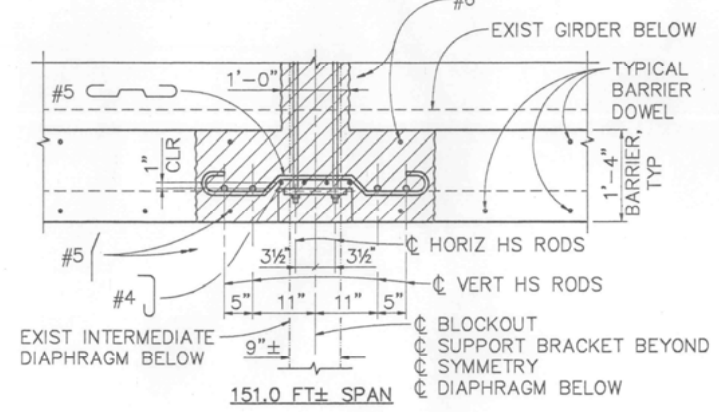
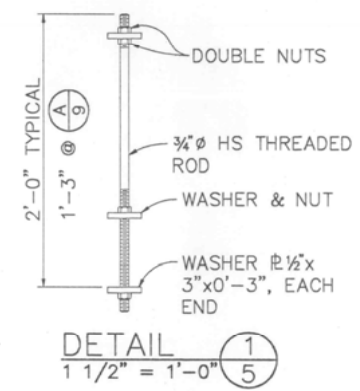
- NOTES:**
- INDICATES EXISTING STRUCTURE
  - ▨ INDICATES LIMITS OF CONCRETE REMOVAL
  - SEE (1/5) FOR HS ROD DETAILS  
SEE (F/6) & (A/9) FOR SUPPORT BRACKETS LOCATED ADJACENT TO EXIST PIERS
  - EXISTING PRESTRESSING CONDUIT LOCATIONS VARY. CONTRACTOR SHALL VERIFY CABLE LOCATIONS PRIOR TO DRILLING ANY HOLES INTO EXISTING GIRDERS.



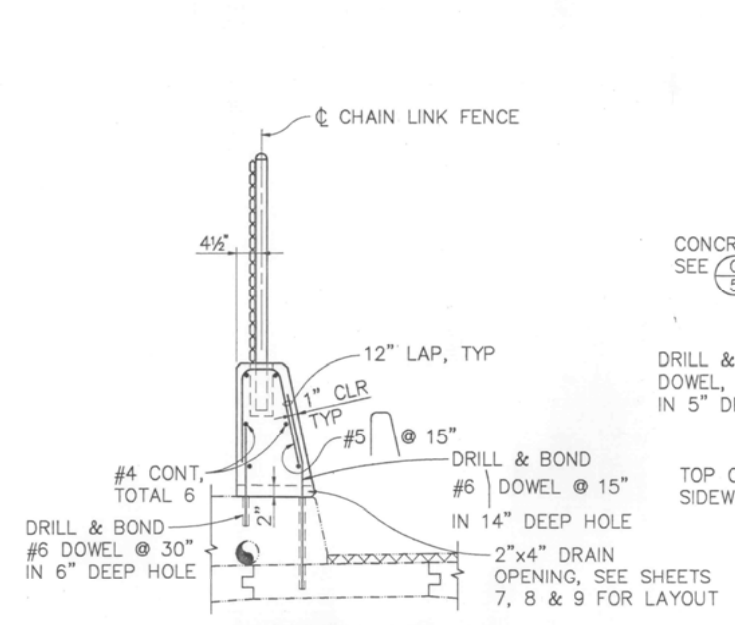
THICKENED GIRDER END SECTION

TYPICAL SECTION AT SUPPORT BRACKETS 80.67 FT± GIRDERS  
3/4" = 1'-0"

SECTION (A) AS NOTED (5)



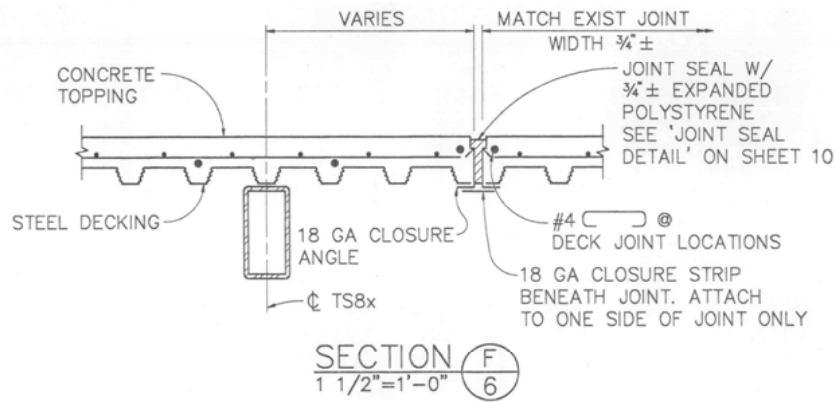
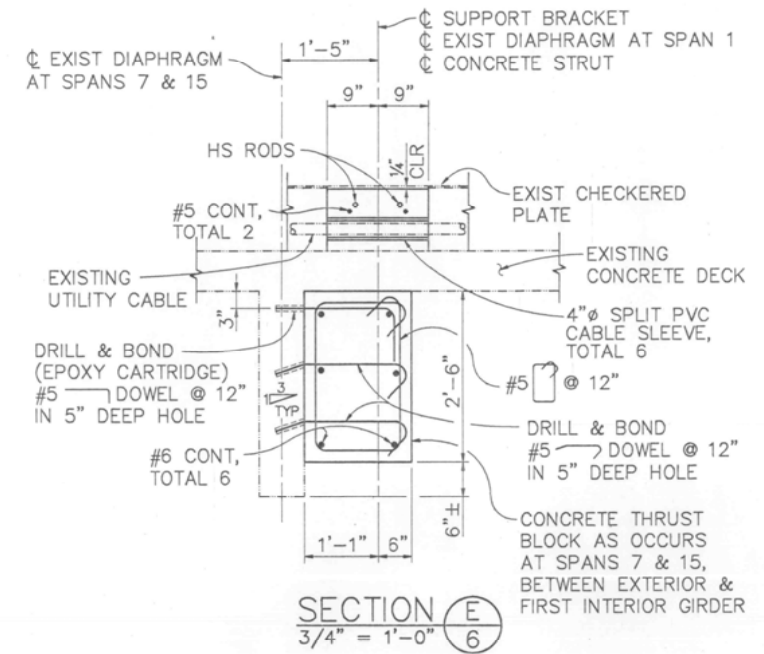
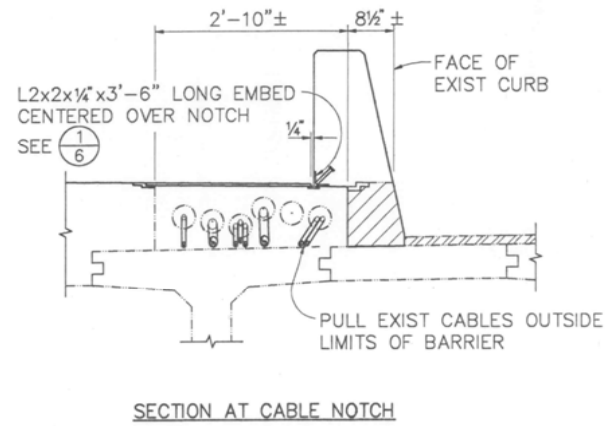
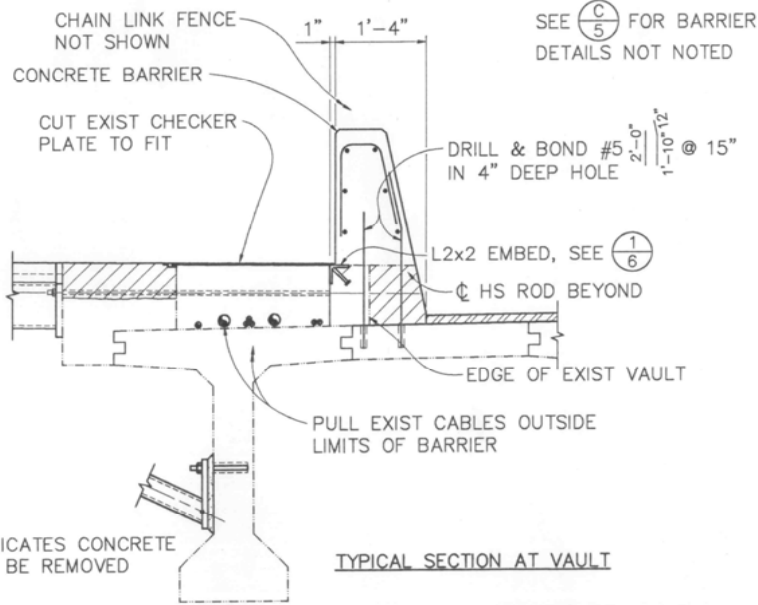
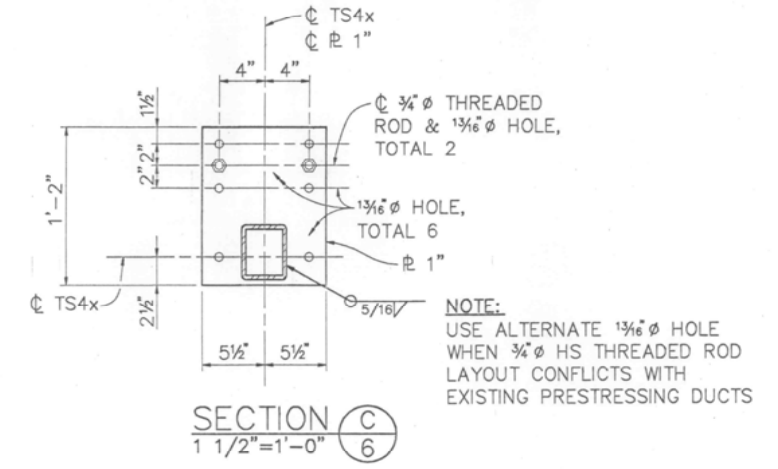
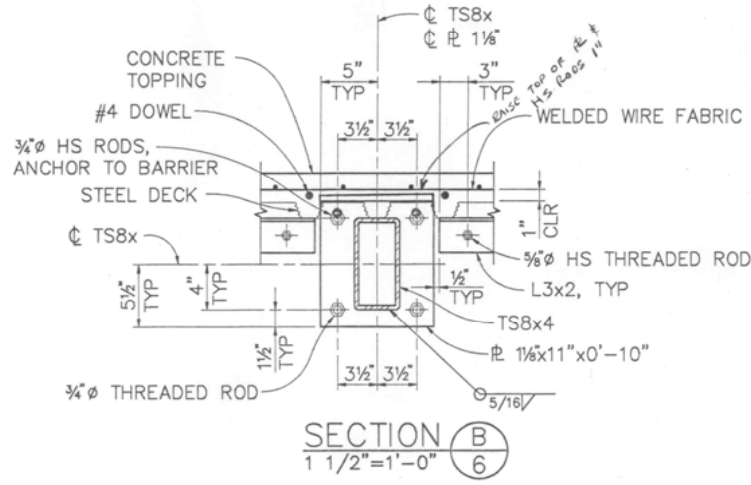
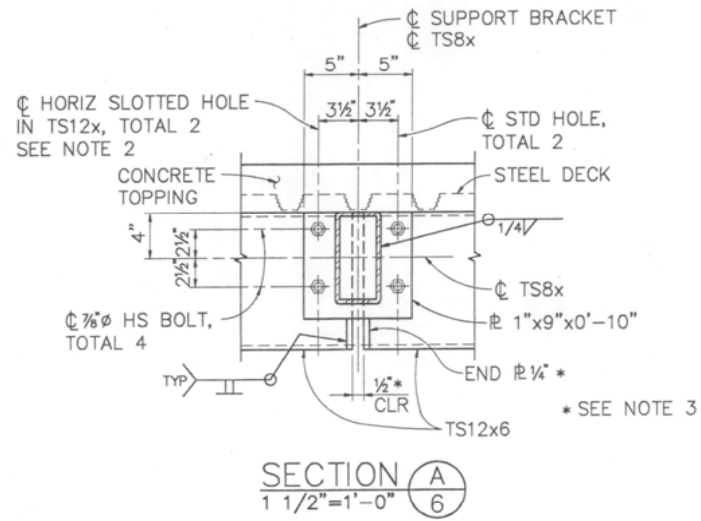
SECTION (B) AS NOTED (5)



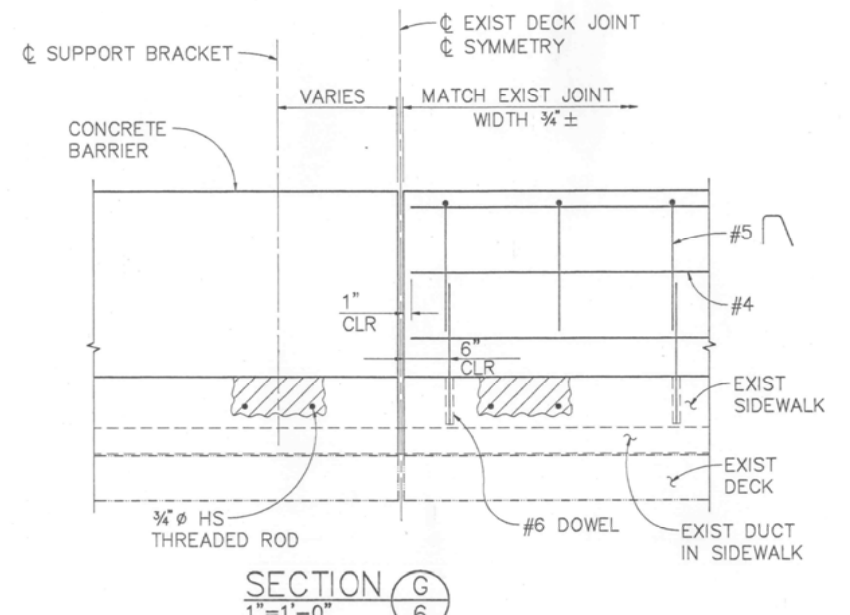
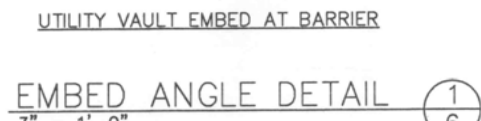
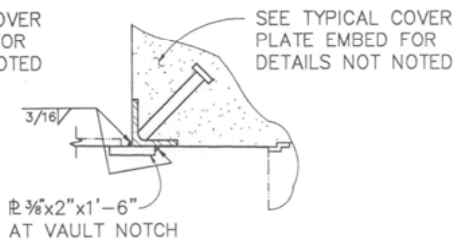
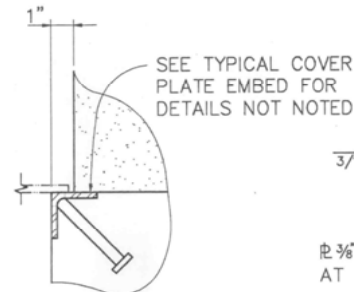
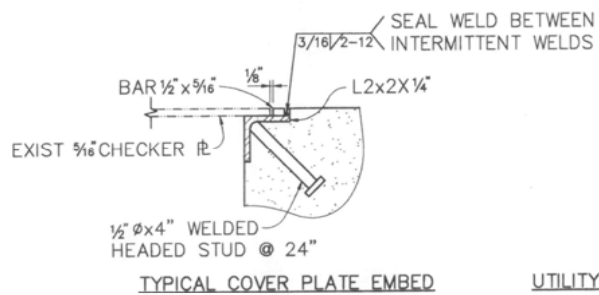
DETAIL (2) AS NOTED (5)

DESIGNED BY	PJD	BRIDGE NO.	18C-012
DRAWN BY	DSD	SCALE	AS SHOWN
CHECKED BY	JLA	PROJECT NO.	9.3058.1
APPROVED BY		YUBA COUNTY	
BIGGS CARDOSA ASSOCIATES INC. STRUCTURAL ENGINEERS		CALIFORNIA	
1871 The Alameda, Suite 200 San Jose, California 95126 408-288-5015		FIFTH STREET BRIDGE BICYCLE LANE	
REGISTERED PROFESSIONAL ENGINEER No. S3302 Exp. 12-31-97		TYPICAL SECTIONS & DETAILS NO. 1	
PLANS APPROVAL DATE 14/1/98			
REVISIONS			
NO.	BY	DATE	
1			
2			
3			
4			
5			
6			
7			
8			
9			
10			
11			
12			
13			
14			
15			
16			
17			
18			
19			
20			
21			
22			
23			
24			
25			
26			
27			
28			
29			
30			
31			
32			
33			
34			
35			
36			
37			
38			
39			
40			
41			
42			
43			
44			
45			
46			
47			
48			
49			
50			

- NOTES:**
- SECTION IS TYPICAL EXCEPT AT SUPPORT BRACKETS ADJACENT TO EXISTING PIERS, WHERE TS12x EDGE BEAMS ARE CONTINUOUS
  - AT SUPPORT BRACKETS WHERE TS12x IS CONTINUOUS, PROVIDE 4 STANDARD SIZE BOLT HOLES IN TS12x
  - NOT APPLICABLE AT LOCATIONS WHERE TS12x IS CONTINUOUS
  - SEE (A/10) FOR SECTION @ ELECTROLIER SUPPORT BRACKETS



- NOTES:**
- ALL ANGLE ASSEMBLIES SHALL BE GALVANIZED AFTER FABRICATION
  - THERE SHALL BE A MINIMUM OF 2 WELDED STUDS PER ANGLE WITH END STUDS LOCATED 4\"/>



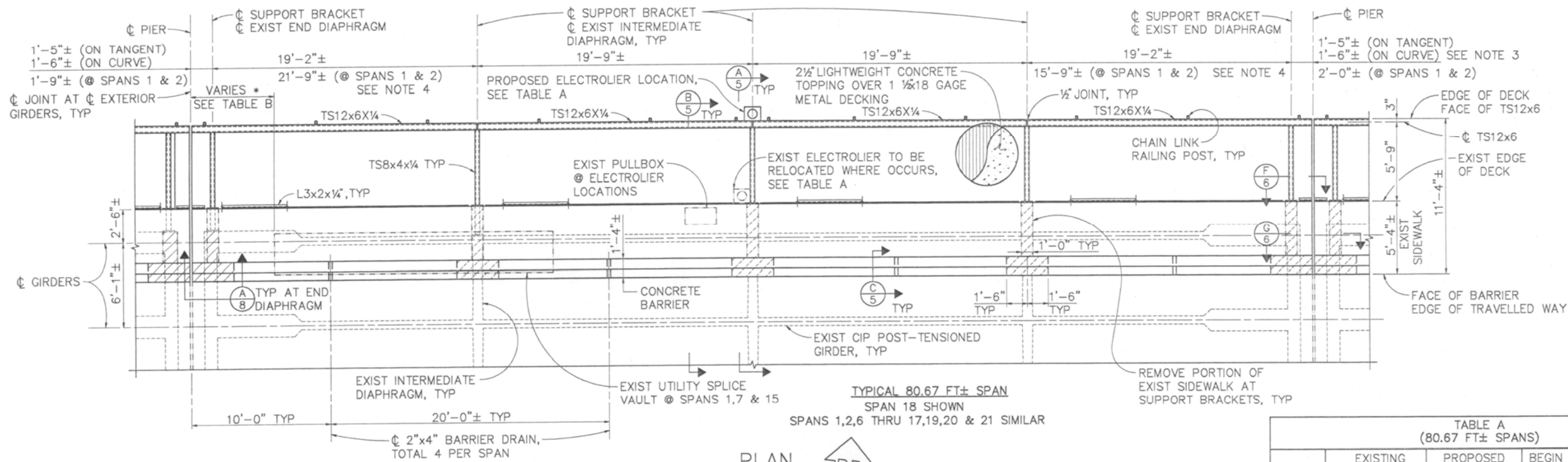
NO.	1	1	1	1
DATE	10/6/95	5/3/95	1/2/95	9/2/94
BY				
REVISIONS	REVISED FOR REBID	RESPONSE TO 100K COMMENTS	100K SUBMITTAL	65K SUBMITTAL

REGISTERED STRUCTURAL ENGINEER  
 10/6/95  
 PLANS APPROVAL DATE

**BER**  
**BIGGS CARDOSA ASSOCIATES INC.**  
 STRUCTURAL ENGINEERS  
 1871 The Alameda, Suite 202  
 San Jose, California 95128  
 408-288-5515

FIFTH STREET BRIDGE BICYCLE LANE  
 CALIFORNIA  
 YUBA COUNTY  
**TYPICAL SECTIONS & DETAILS NO. 2**

DESIGNED BY	PJD
DRAWN BY	DSD
CHECKED BY	JLA
APPROVED BY	AS SHOWN
SCALE	PROJECT NO. 9305B.1
BRIDGE NO.	18C-012



PLAN  
1/4" = 1'-0"

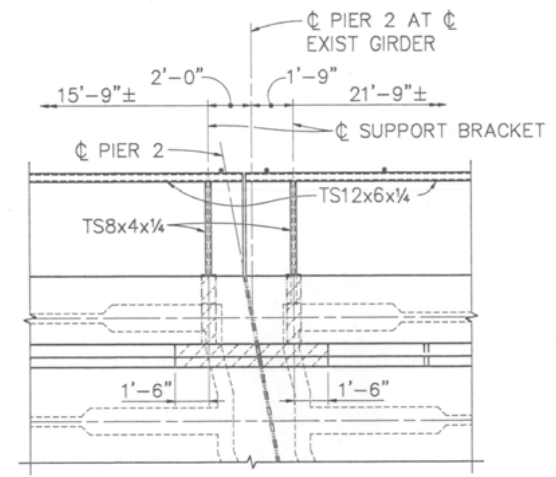
SPAN	DISTANCE FROM $\phi$ PIER TO EDGE OF SPLICE VAULT *
1	10'-8"±
7	7'-1"±
15	6'-0"±

\* MEASURED ALONG EDGE OF EXIST DECK

NOTES:

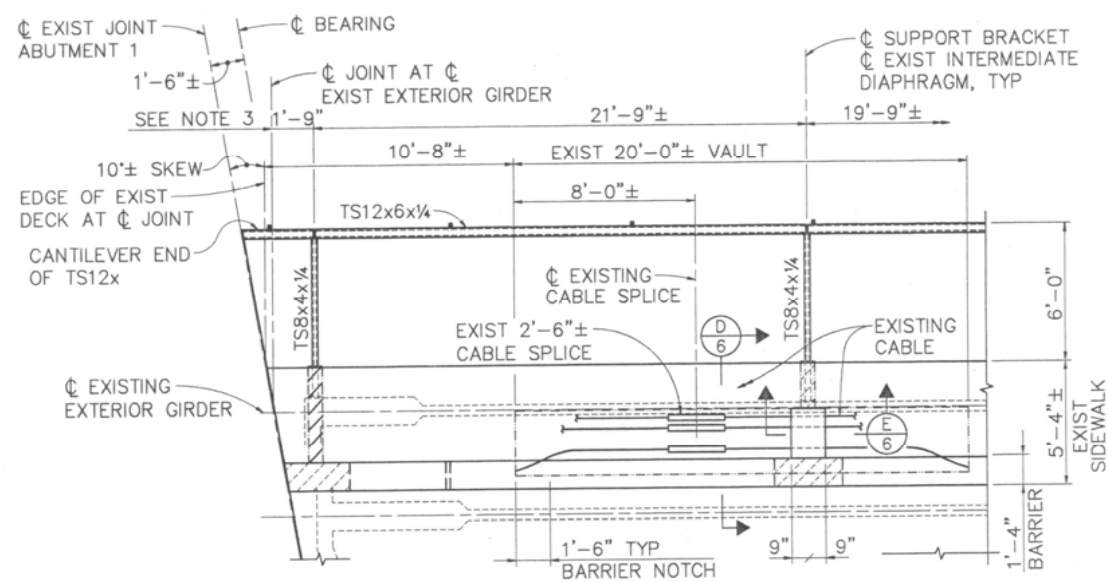
- INDICATES EXISTING STRUCTURE
- ▨ INDICATES CONCRETE TO BE REMOVED
- SUPPORT BRACKET DIMENSIONS MEASURED ALONG  $\phi$  EXTERIOR GIRDER
- AT SKEWED GIRDERS SEE PARTIAL LAYOUT PLANS

TYPICAL 80.67 FT± SPAN  
SPAN 18 SHOWN  
SPANS 1,2,6 THRU 17,19,20 & 21 SIMILAR

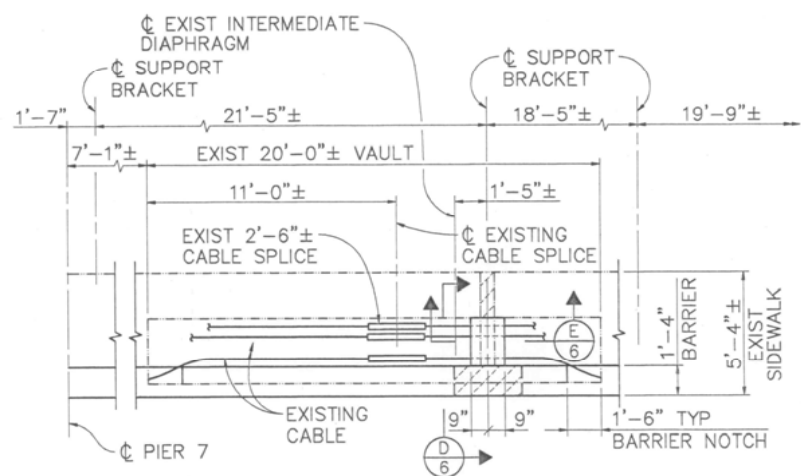


PARTIAL PLAN AT PIER 2  
1/4" = 1'-0"

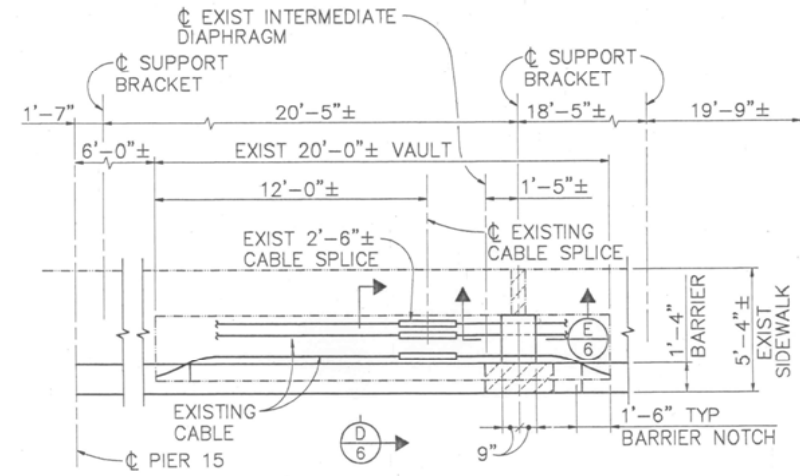
SPAN	EXISTING ELECTROLIER LOCATION	PROPOSED ELECTROLIER LOCATION	BEGIN SPAN $\phi$ ROADWAY STATION	END SPAN $\phi$ ROADWAY STATION
1	N/A	N/A	15+66.6±	16+46.8±
2	16+86.0±	16+87.2±	16+46.8±	17+27.5±
6	21+58.0±	21+58.5±	21+18.1±	21+98.8±
7	N/A	N/A	21+98.8±	22+79.5±
8	23+18.5±	23+19.8±	22+79.5±	23+60.2±
9	N/A	N/A	23+60.2±	24+40.8±
10	24+80.0±	24+81.2±	24+40.8±	25+21.5±
11	N/A	N/A	25+21.5±	26+02.2±
12	26+41.4±	26+42.5±	26+02.2±	26+82.8±
13	N/A	N/A	26+82.8±	27+63.5±
14	28+02.4±	28+03.8±	27+63.5±	28+44.2±
15	N/A	N/A	28+44.2±	29+24.8±
16	29+64.0±	29+65.2±	29+24.8±	30+05.5±
17	N/A	N/A	30+05.5±	30+86.2±
18	31+25.8±	31+26.5±	30+86.2±	31+66.9±
19	N/A	N/A	31+66.9±	32+47.5±
20	32+87.0±	32+87.9±	32+47.5±	33+28.2±
21	N/A	N/A	33+28.2±	34+07.8±



GIRDER & VAULT LAYOUT AT SPAN 1  
1/4" = 1'-0"



VAULT AT SPAN 7  
1/4" = 1'-0"



VAULT AT SPAN 15  
1/4" = 1'-0"

SPLICE VAULTS-PARTIAL PLANS

REVISIONS	NO.	DATE
1	1	10/6/95
		11/2/95
		12/2/95
		9/2/96



REGISTERED STRUCTURAL ENGINEER  
10/6/95  
PLANS APPROVAL DATE

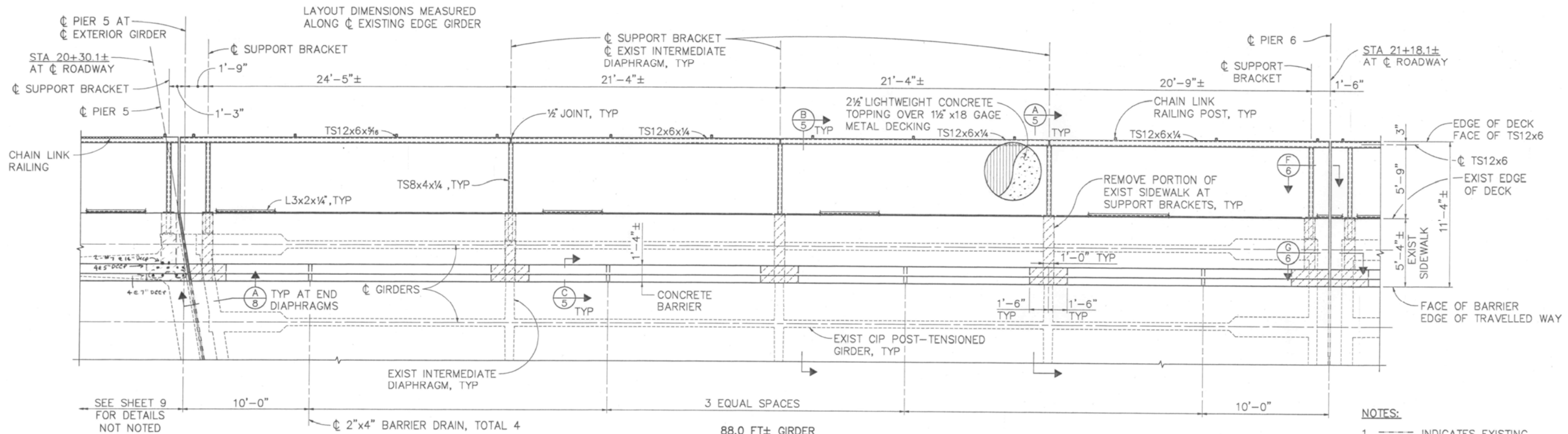
**BIGGS CARDOSA ASSOCIATES INC**  
STRUCTURAL ENGINEERS  
1871 The Alameda, Suite 200  
San Jose, California 95126  
408-286-9515

FIFTH STREET BRIDGE BICYCLE LANE  
CALIFORNIA  
YUBA COUNTY  
DECK PLAN NO. 1

DESIGNED BY PJD  
DRAWN BY DSD  
CHECKED BY JLA  
APPROVED BY AS SHOWN  
SCALE AS SHOWN  
PROJECT NO. 93058.1

BRIDGE NO. 18C-012





88.0 FT± GIRDER  
SPAN 5

PLAN  
1/4" = 1'-0"

GENERAL NOTES

DESIGN: BRIDGE DESIGN SPECIFICATIONS (1983 AASHTO WITH INTERIMS AND REVISIONS BY CALTRANS)

REINFORCED CONCRETE:

EXISTING (ASSUMED VALUES)	NEW CONSTRUCTION
$f_y = 40,000$ psi	$f_y = 60,000$ psi
$f'_c = 3,000$ psi (EXCEPT AS NOTED)	$f'_c = 3,250$ psi (TYPICAL)
$f'_c = 2,500$ psi (ROADWAY SLAB)	$f'_c = 3,250$ psi (LIGHTWEIGHT CONCRETE)
$f'_c = 4,500$ psi (POST TENSIONED SLAB-SPAN 22)	
$f'_c = 5,000$ psi (POST TENSIONED GIRDERS; SPANS 1 THRU 21)	

STRUCTURAL STEEL:  $F_y = 36,000$  psi  
 $F_y = 46,000$  psi (TUBULAR SECTIONS)  
ALL BOLTED CONNECTION SHALL BE 'BEARING TYPE'

STANDARD PLANS DATED JULY 1992

A10A/B	ABBREVIATIONS & SYMBOLS
A85	CHAIN LINK FENCE
B2-5	PILE DETAILS CLASS 45 AND CLASS 70
T13	TRAFFIC CONTROL SYSTEM FOR LANE CLOSURE ON TWO LANE CONVENTIONAL HIGHWAYS

ABBREVIATIONS

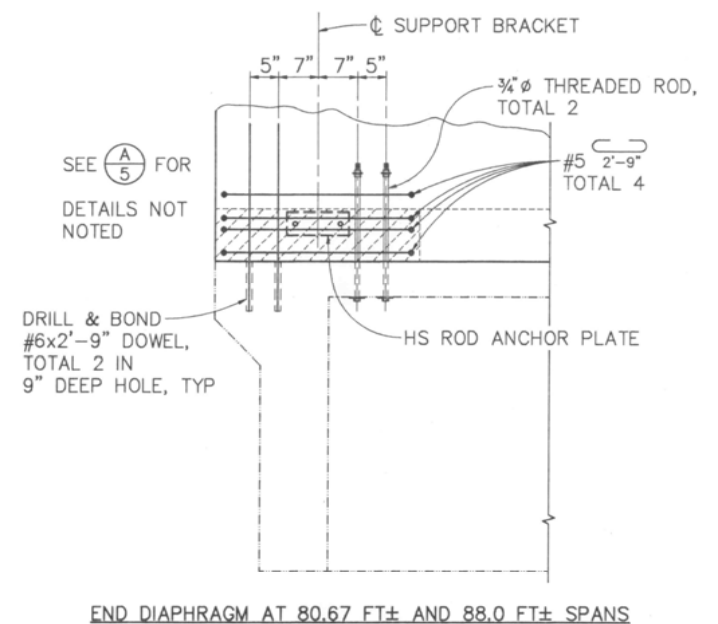
CONT	CONTINUOUS
SIM	SIMILAR
Ø	DIAMETER

LOCATION OF CORED AND DRILLED HOLES SHOWN IN THE PLANS ARE APPROXIMATE. PRIOR TO PLACING HOLES IN CONCRETE, THE CONTRACTOR SHALL LOCATE ALL REINFORCING STEEL AND POST TENSIONING DUCTS AND ADJUST THE LOCATION OF THE HOLES TO CLEAR ALL REINFORCING BARS AND POST TENSIONING DUCTS (EXCEPT AS NOTED). FINAL HOLE LOCATIONS ARE SUBJECT TO THE APPROVAL OF THE ENGINEER.

ELEVATIONS IN PLANS BASED ON THE AS-BUILT PLANS BENCHMARK REFERENCE (U.S.E.D. DATUM) AND THE ABUTMENT 1 CONTROL ELEVATION (CL ROADWAY, TOP OF DECK) SHOWN IN THESE PLANS.

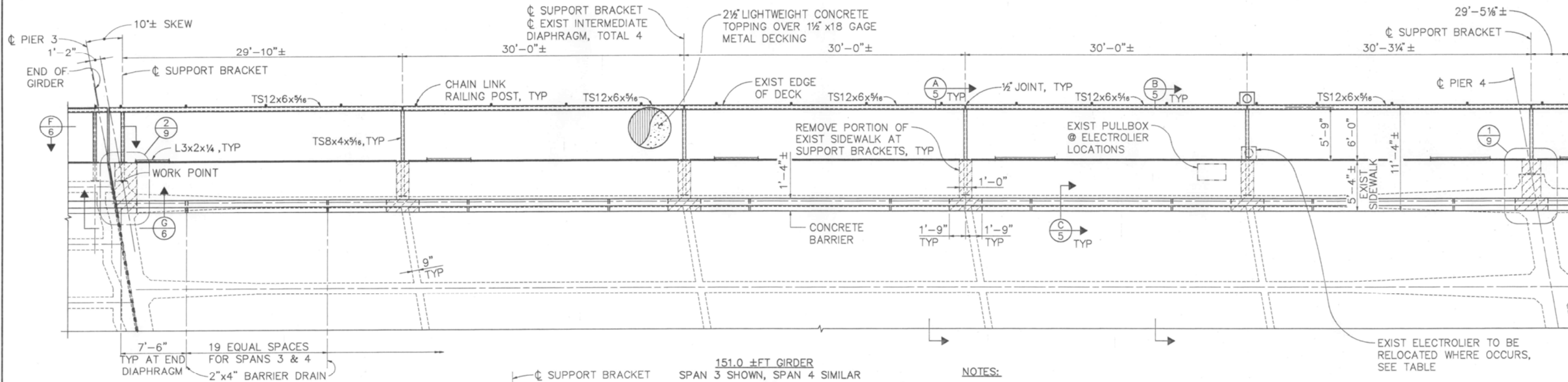
- (B7-11) INDICATES STANDARD PLAN SHEET NO.
- (U42) INDICATES DETAIL NO.
- (A 5) INDICATES SECTION NO.
- (1 5) INDICATES SHEET NO. SHOWN ON
- (1 6) INDICATES DETAIL NO.
- (1 6) INDICATES SHEET NO. SHOWN ON

- NOTES:
1. --- INDICATES EXISTING STRUCTURE
  2. [Hatched Area] INDICATES CONCRETE TO BE REMOVED
  3. SUPPORT BRACKET DIMENSIONS MEASURED ALONG CL EXTERIOR GIRDER



SECTION A-A  
3/4" = 1'-0"

DESIGNED BY	PJD	BRIDGE NO.	18C-012
DRAWN BY	DSD	PROJECT NO.	93058.1
CHECKED BY	JLA	SCALE	AS SHOWN
APPROVED BY	[Signature]	YUBA COUNTY	
BIGGS CARDOSA ASSOCIATES INC. STRUCTURAL ENGINEERS		CALIFORNIA	
1871 The Alameda, Suite 200 San Jose, California 95126 408-298-5515		FIFTH STREET BRIDGE BICYCLE LANE	
REGISTERED STRUCTURAL ENGINEER		DECK PLAN NO. 2	
PLANS APPROVAL DATE 10/6/95			
REGISTERED PROFESSIONAL ENGINEER			
THOMAS L. SWATZKE No. S3302 Exp. 12-31-97			
REVISIONS	NO.	BY	DATE
REVISED TO 100% COMMENTS	1		10/6/95
100% SUBMITTAL	2		5/5/95
65% SUBMITTAL	3		7/2/95
	4		9/2/94

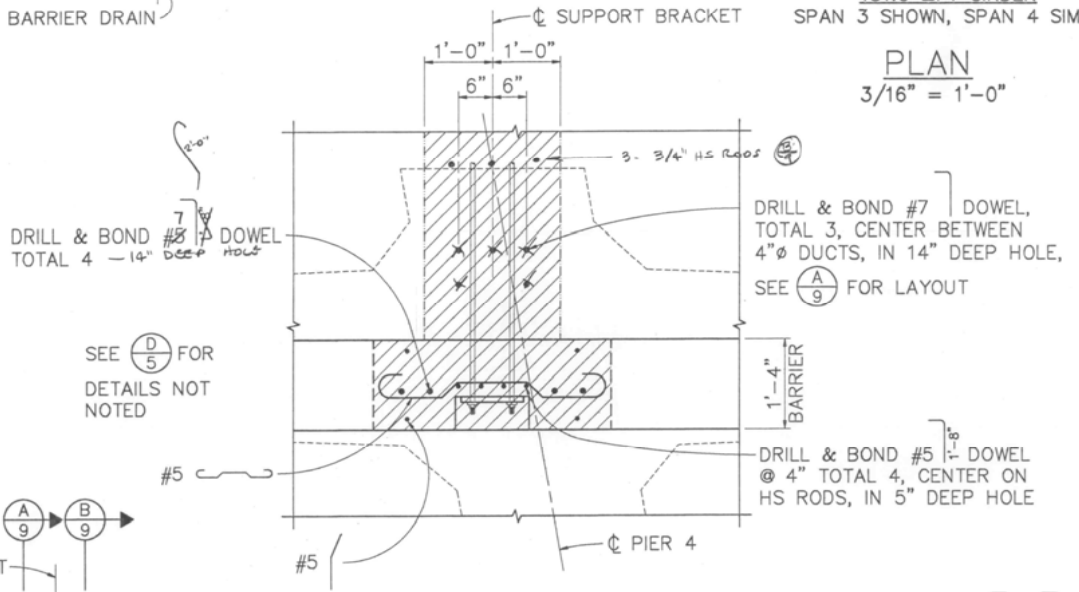


PLAN  
 3/16" = 1'-0"

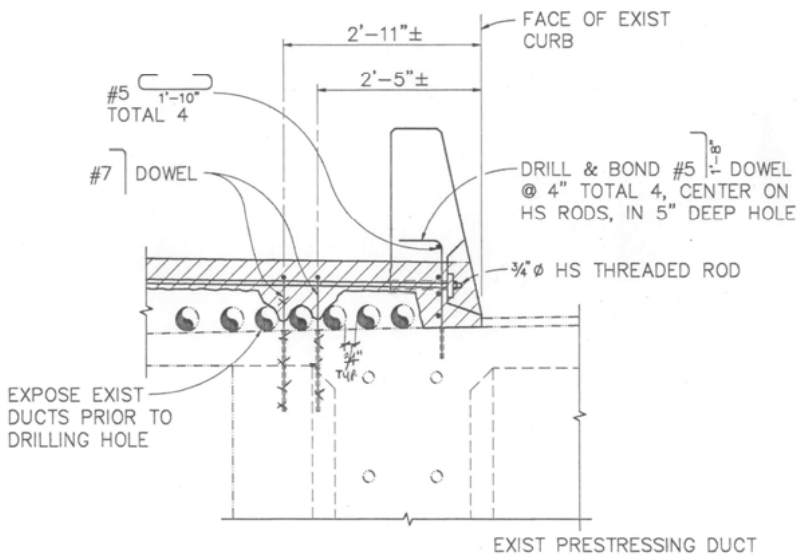
- NOTES:
- INDICATES EXISTING STRUCTURE
  - ▨ INDICATES CONCRETE TO BE REMOVED
  - SUPPORT BRACKET DIMENSIONS MEASURED ALONG CL EXTERIOR GIRDER

ELECTROLIER LOCATION TABLE  
 (151.0 FT± SPANS)

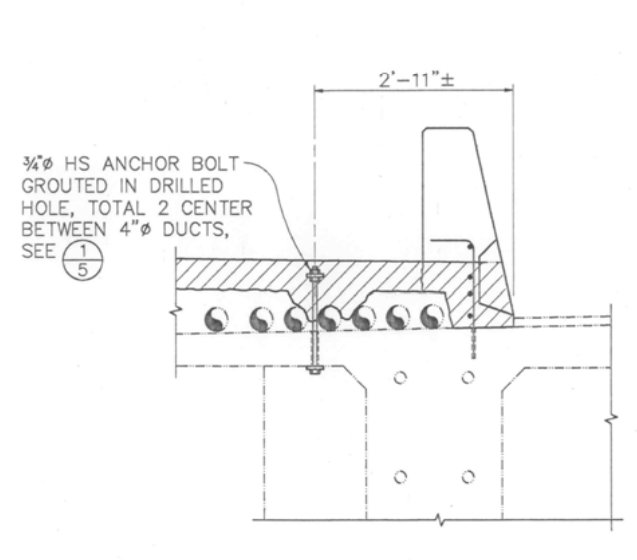
SPAN	EXISTING ELECTROLIER LOCATION	PROPOSED ELECTROLIER LOCATION	BEGIN SPAN STATION	END SPAN STATION
3	18+46.0±	18+44.7±	17+27.5±	18+78.8±
4	20+07.0±	19+96.0±	18+78.8±	20+30.1±



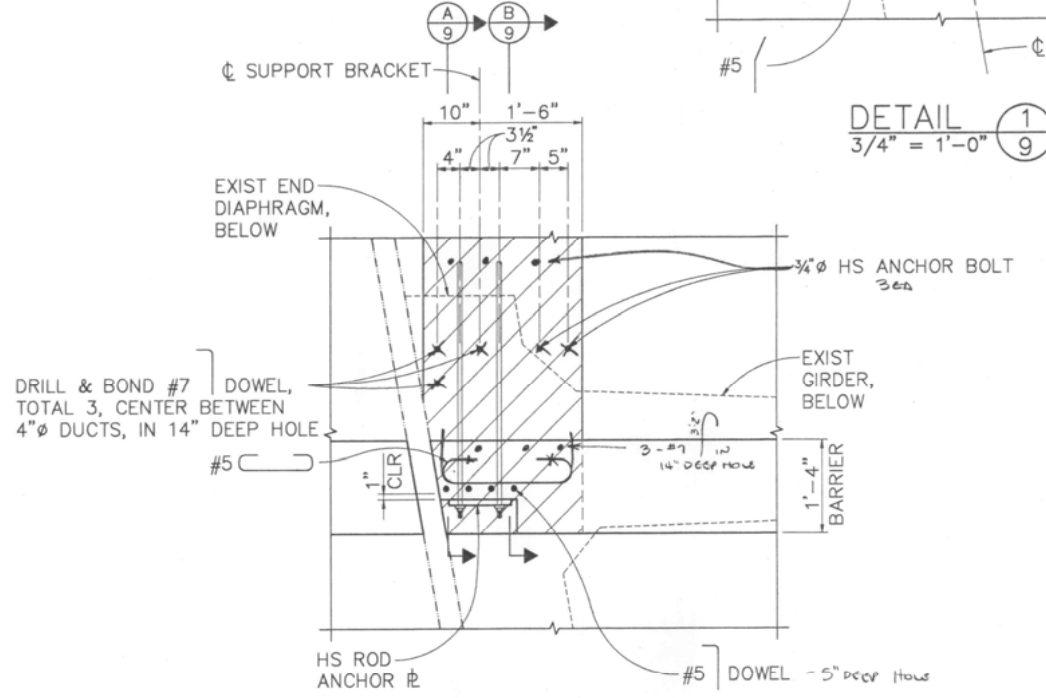
DETAIL 1  
 3/4" = 1'-0"



SECTION A  
 3/4" = 1'-0"



SECTION B  
 3/4" = 1'-0"



DETAIL 2  
 3/4" = 1'-0"

REVISIONS

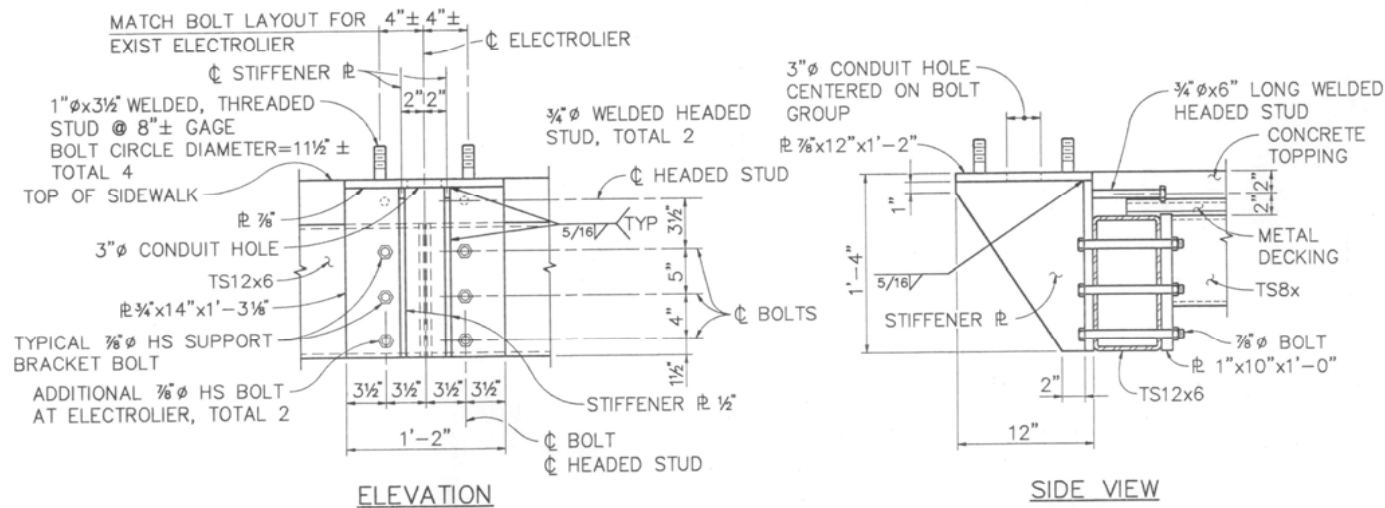
NO.	DATE	BY	REVISIONS
1	10/6/95	TLS	REVISED FOR REBID
1	5/3/95	TLS	RESPONSE TO 100% COMMENTS
1	1/22/95	TLS	100% SUBMITTAL
1	9/2/94	TLS	65% SUBMITTAL

REGISTERED STRUCTURAL ENGINEER  
 No. S3302  
 Exp. 12-31-97  
 11/6/95  
 PLANS APPROVAL DATE

BIGGS CARDOSA ASSOCIATES INC  
 STRUCTURAL ENGINEERS  
 1871 The Alameda, Suite 200  
 San Jose, California 95126  
 408-296-5515

FIFTH STREET BRIDGE BICYCLE LANE  
 CALIFORNIA  
 YUBA COUNTY  
 DECK PLAN NO. 3  
 PROJECT NO. 93058.1  
 AS SHOWN  
 SCALE  
 APPROVED BY  
 CHECKED BY JLA  
 DRAWN BY DSD  
 DESIGNED BY PJD  
 BRIDGE NO. 18C-012

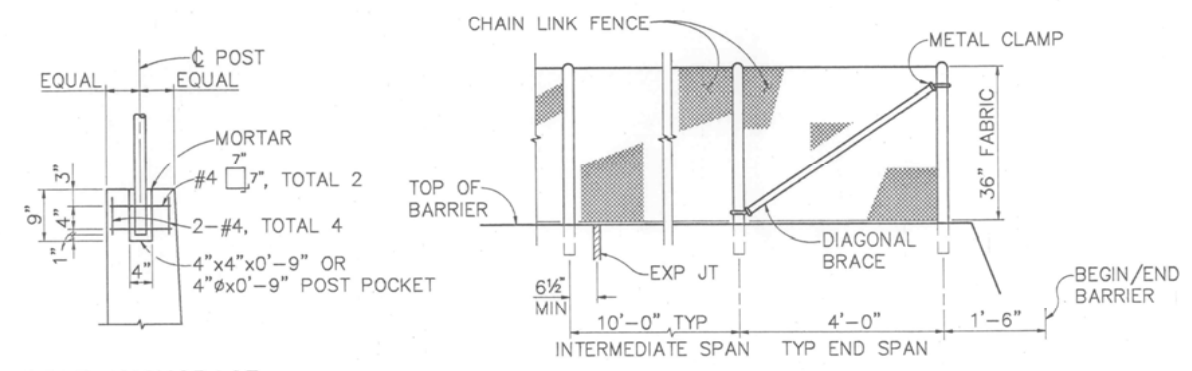




ELEVATION

SIDE VIEW

**ELECTROLIER SUPPORT BRACKET** (A) 10  
1 1/2" = 1'-0"

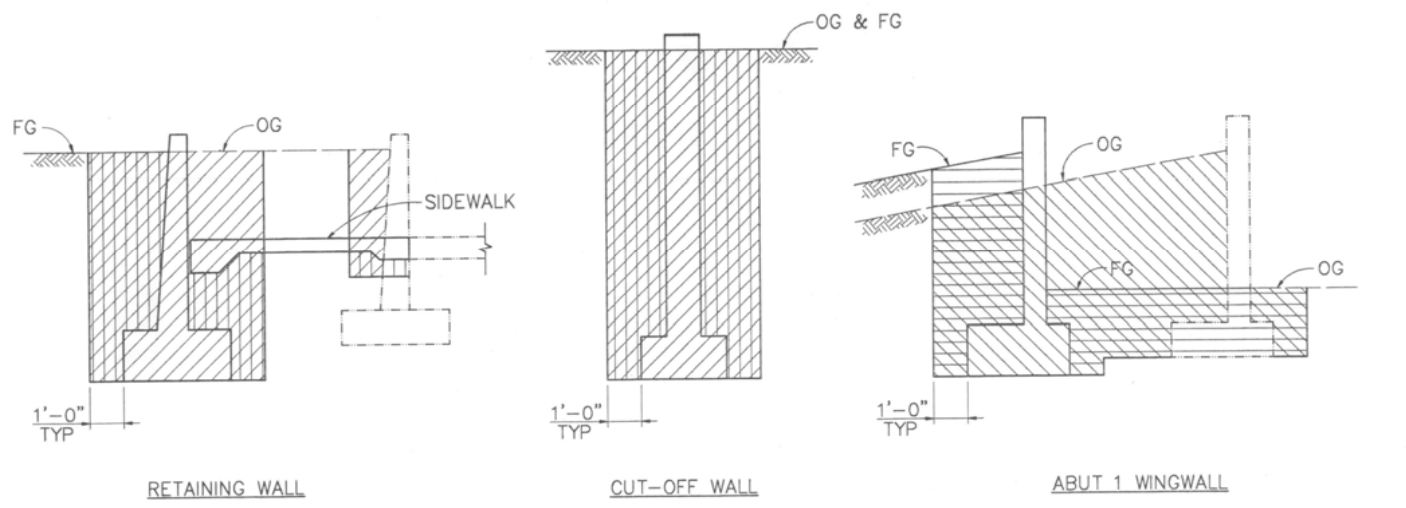


POST ANCHORAGE

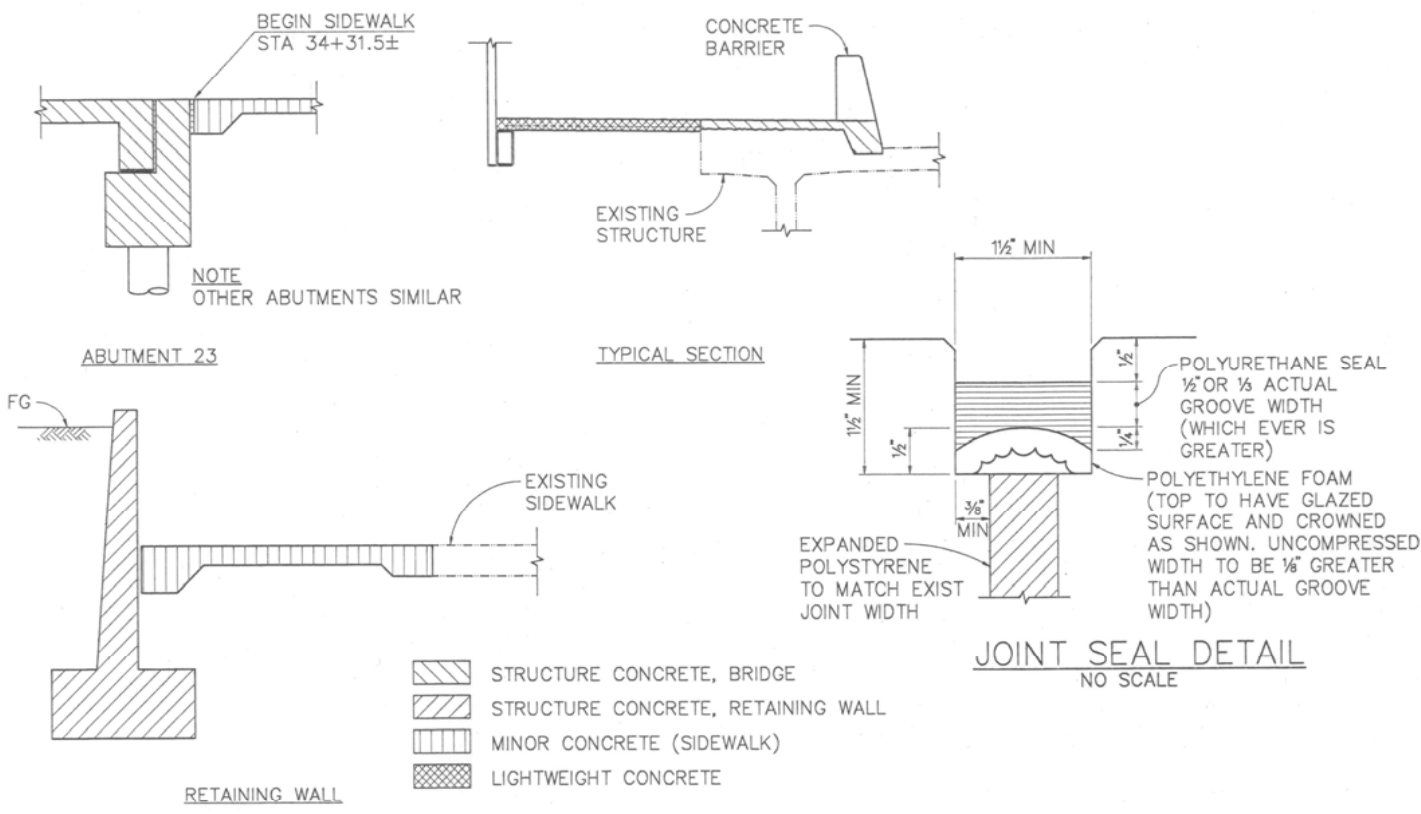
ELEVATION

NOTE: FOR OTHER DETAILS SEE STD PLAN A85 CHAIN LINK FENCE

**CHAIN LINK FENCE ON BARRIER**  
3/4" = 1'-0"



**LIMITS OF PAYMENT - EXCAVATION & BACKFILL**  
NO SCALE



**CONCRETE TYPE LIMITS**  
NO SCALE

DESIGNED BY	PJD
DRAWN BY	DSD
CHECKED BY	JLA
APPROVED BY	AS SHOWN
SCALE	AS SHOWN
PROJECT NO.	93058.1
BRIDGE NO.	18C-012
YUBA COUNTY	
CALIFORNIA	
MISCELLANEOUS DETAILS	
REVISIONS	
NO.	
DATE	
BY	
REVISIONS	
65% SUBMITTAL	
100% SUBMITTAL	
RESPONSE TO 100% COMMENTS	
TLS 5/3/95	
TLS 10/6/95	
TLS 1/2/95	
TLS 9/2/94	
REVISIONS	

REGISTERED PROFESSIONAL ENGINEER  
THOMAS L. SWATZ  
No. S3302  
Exp. 12-31-97  
1-16-95  
PLANS APPROVAL DATE  
REGISTERED STRUCTURAL ENGINEER  
BIGGS CARDOSA ASSOCIATES INC  
STRUCTURAL ENGINEERS  
1871 The Alameda, Suite 200  
Alameda, California 94510  
408-208-5510

FIFTH STREET BRIDGE BICYCLE LANE  
YUBA COUNTY  
CALIFORNIA  
MISCELLANEOUS DETAILS

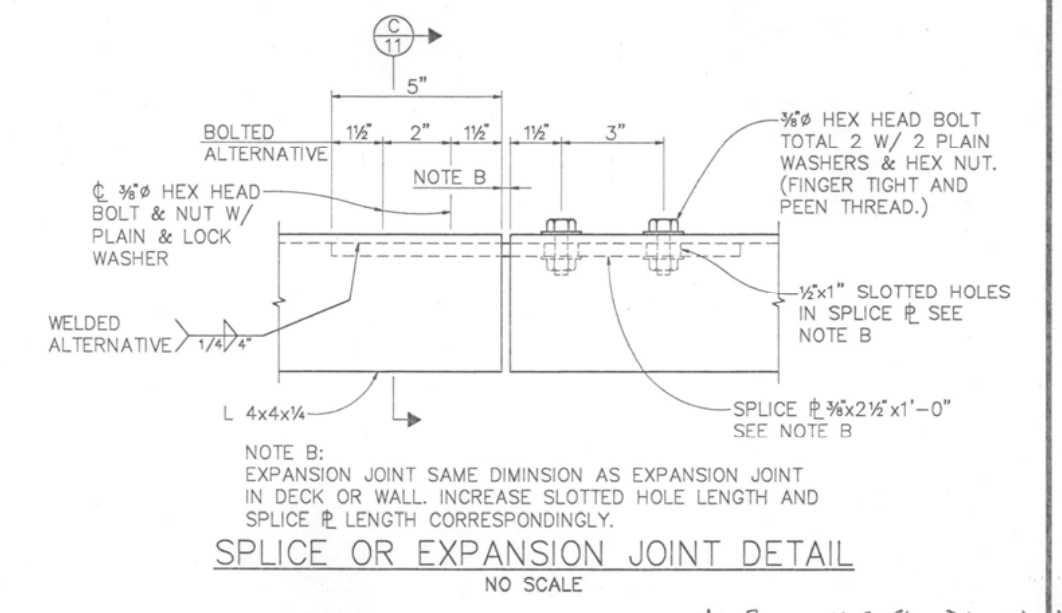
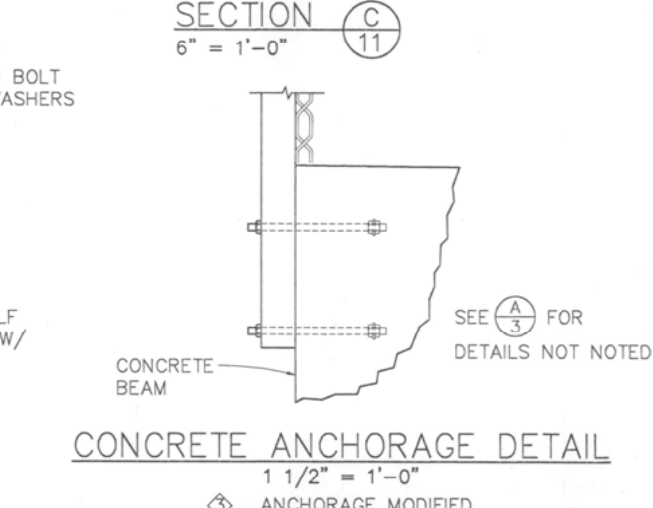
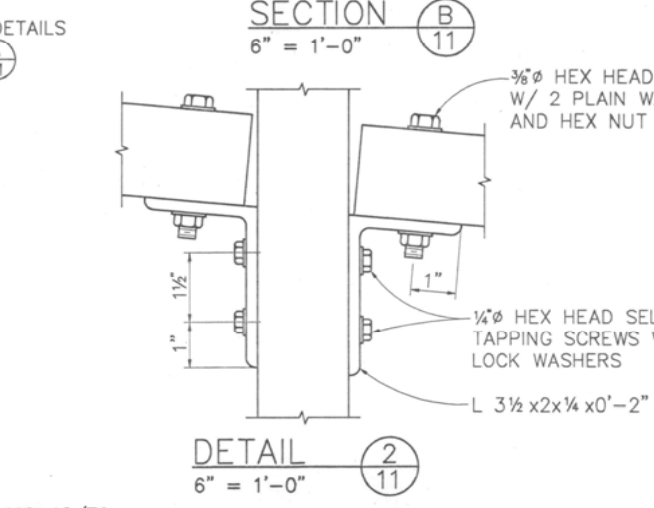
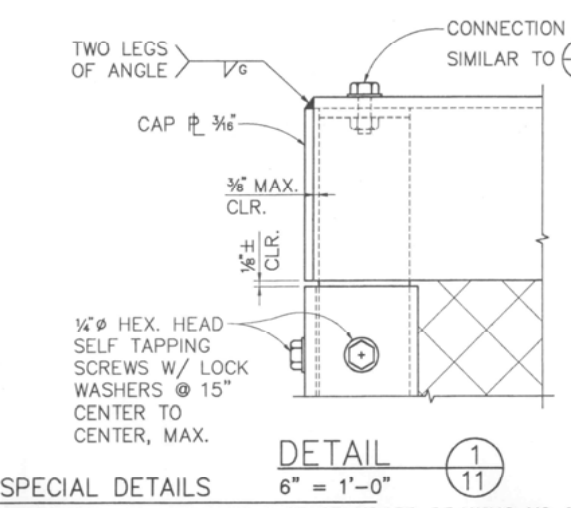
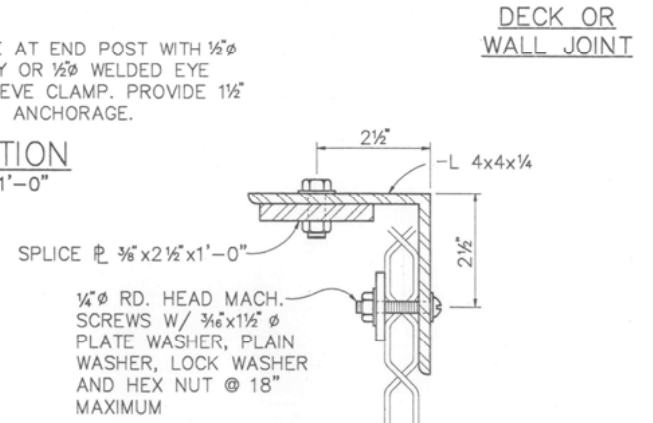
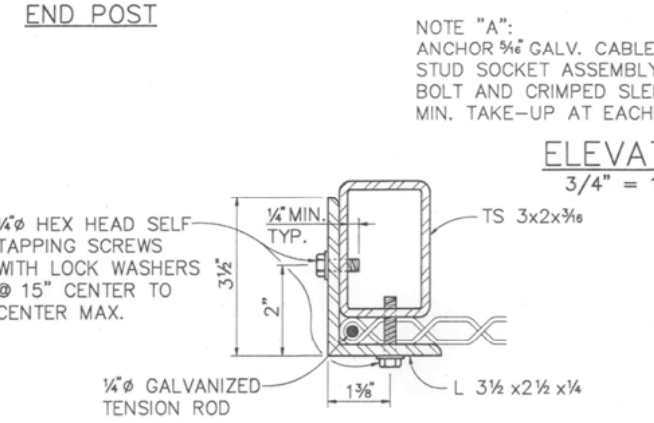
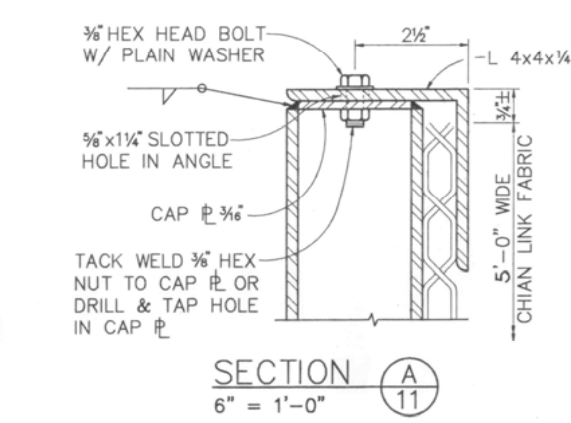
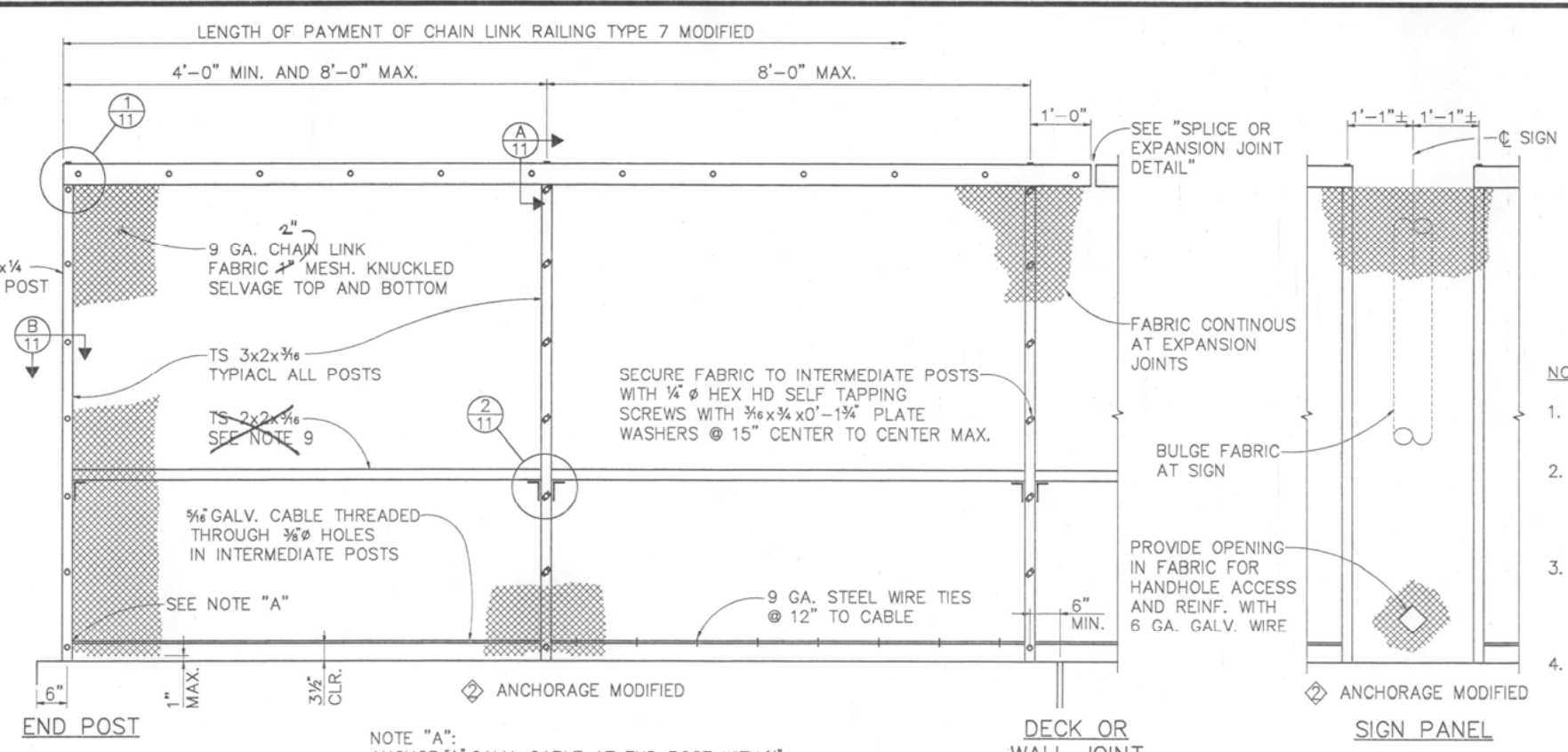
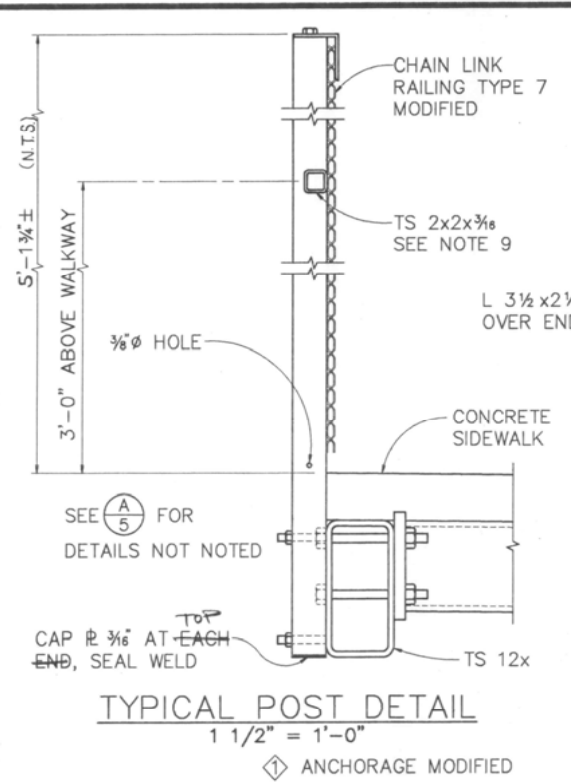
REGISTERED PROFESSIONAL ENGINEER  
THOMAS L. SWATZ  
No. S3302  
Exp. 12-31-97  
1-16-95  
PLANS APPROVAL DATE  
REGISTERED STRUCTURAL ENGINEER  
BIGGS CARDOSA ASSOCIATES INC  
STRUCTURAL ENGINEERS  
1871 The Alameda, Suite 200  
Alameda, California 94510  
408-208-5510

DIST	COUNTY	ROUTE	POST MILES TOTAL PROJECT	SHEET NO.	TOTAL SHEETS

REGISTERED STRUCTURAL ENGINEER	
PLANS APPROVAL DATE	

BIGGS CARDOSA ASSOCIATES INC.  
1871 THE ALAMEDA, SUITE 200  
SAN JOSE, CALIFORNIA 95126



- NOTES:**
- RAILING ASSEMBLY EXCEPT CHAIN LINK FABRIC TO BE GALVANIZED AFTER FABRICATION.
  - RAILING SHALL CONFORM TO HORIZONTAL AND VERTICAL ALIGNMENT. POST SHALL BE VERTICAL. HORIZONTAL ANGLE SHALL BE BENT TO CONFORM TO HORIZONTAL ALIGNMENT IF RADIUS IS 150' OR LESS.
  - HORIZONTAL ANGLE SHALL BE CONTINUOUS OVER NOT LESS THAN TWO INTERMEDIATE POSTS, EXCEPT THAT A SHORTER LENGTH IS PERMITTED AT EXPANSION JOINTS AND OTHER RAILING DISCONTINUITIES.
  - WHEN RAILING IS PLACED ON CURVED HORIZONTAL ALIGNMENT WITH RADIUS OF 150' OR LESS, DRILL 1/2" x 3" DEEP HOLE IN SLAB AND SET IN EPOXY ADHESIVE 3/8" WELDED EYE BOLT FOR 3/8" CABLE TO LIMIT THE MIDORDINATE DISTANCE BETWEEN THE 3/8" CABLE AND CURVE TO BE 1" MAXIMUM.
  - PLACE FABRIC PARALLEL TO SLOPE.
  - ALTERNATIVE DETAILS MAY BE SUBMITTED BY THE CONTRACTOR FOR ENGINEER'S APPROVAL.
  - PROVIDE THIMBLES AT ALL CABLE LOOPS.
  - PEEN ALL EXPOSED BOLTS.
  - TS 2x2x3/8 REQUIRED FOR CURVES WITH RADIUS OF 150' OR LESS. BEND TO CONFORM TO CURVE.

SPECIAL DETAILS THIS SHEET IS A FACSIMILE OF STANDARD DRAWING XS 9-112-12/76

STANDARD DRAWING		APPROVAL	
FILE NO. XS 9-112	DESIGN BY R. W. BISHOP	CHECKED J. HAMAGUCHI	APPROVED JERRY A. McKEE
DRAWING DATE REVISED	DETAILS BY K. C. B.	CHECKED J. HAMAGUCHI	DESIGN SUPERVISOR
	SUBMITTED BY R. W. BISHOP		REGISTERED CIVIL ENGINEERING NUMBER

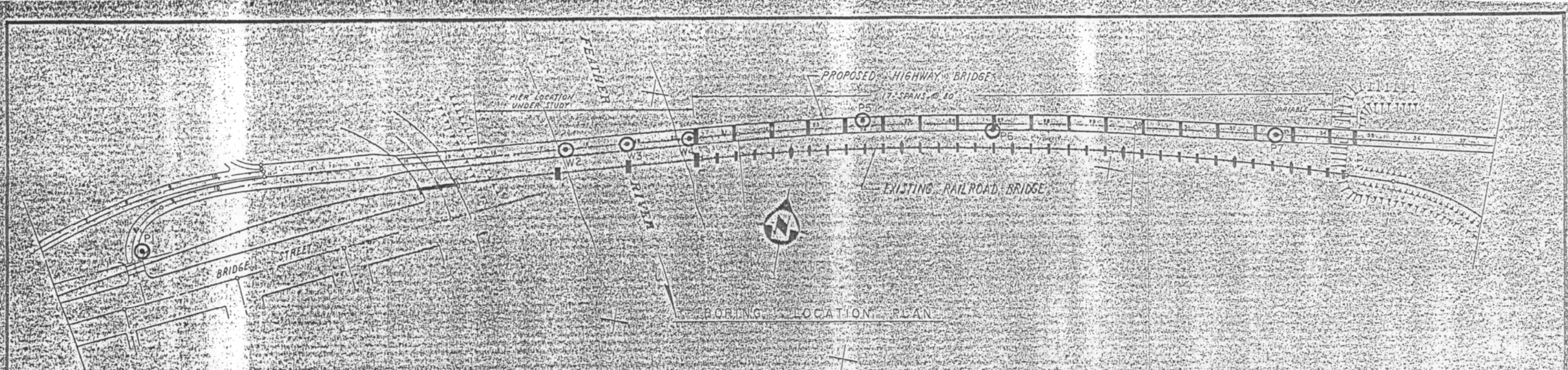
- ANCHORAGE MODIFIED
- ANCHORAGE MODIFIED
- ANCHORAGE MODIFIED

PREPARED FOR THE STATE OF CALIFORNIA DEPARTMENT OF TRANSPORTATION  
DIVISION OF STRUCTURES  
STRUCTURE DESIGN

BRIDGE NO. 18C-012	FIFTH STREET BRIDGE BICYCLE LANE
POST MILE	CHAIN LINK RAILING TYPE 7 MODIFIED



100% SUBMITTAL	TLS 11/19/55
65% SUBMITTAL	TLS 9/2/54
REVISIONS	BY DATE
NO.	



**LEGEND**

- INDICATES BORINGS ACCOMPLISHED BY WASHING TO SAMPLE DEPTH AND SAMPLING WITH A 30-DIAMETER PORTER RETRACTABLE PISTON TYPE SAMPLER DRIVEN WITH A 140 LB. HAMMER DROPPING 30".
- INDICATES BORINGS ACCOMPLISHED WITH PORTER RETRACTABLE PISTON TYPE SAMPLER DRIVEN CONTINUOUSLY BY 100 LB. HAMMER DROPPING 30".
- GROUND SURFACE ALONG CENTERLINE
- MATERIAL SAMPLED IN LOG
- SOIL DENSITY - UNIT DRY WEIGHT LB./CU. FT.
- MOISTURE CONTENT - PERCENT OF DRY WEIGHT
- BLOW COUNT - NUMBER OF BLOWS REQUIRED TO ADVANCE SAMPLER ONE FOOT
- S. R. R. BRIDGE PILE TIP ELEVATIONS (DEEPEST PENETRATION AT EACH PILE)

AS BUILT PLANS  
Cont. No. \_\_\_\_\_  
Completed \_\_\_\_\_

FIFTH STREET BRIDGE BETWEEN  
MARYSVILLE AND YUBA CITY  
SUTTER COUNTY CALIFORNIA

**SOIL PROFILE**

PORTER, URQUHART, McCREARY & O'BRIEN  
CONSULTING ENGINEERS

DATE: 1-18-57 PROJECT NO. 36-302 APPROVED BY: [Signature] PLATE NO. \_\_\_\_\_  
DRAWN BY: R.L. CHECKED BY: H.W. REG. CIVIL ENG. NO. 916

DESIGNED BY PJD  
DRAWN BY DSD  
CHECKED BY JLA  
APPROVED BY [Signature]  
SCALE AS SHOWN  
PROJECT NO. 93058.1

FIFTH STREET BRIDGE BICYCLE LANE  
CALIFORNIA  
YUBA COUNTY  
AS BUILT LOG OF TEST BORINGS